

NANOMINE
TECHNOLABS
"CONNECTING DEVICES"

Nanomine Technolabes NPEX2 is a weather proof, cost effective cellular IoT Gateways designed for outdoor applications, NPEX2 supports connectivity options like RS-485, RS-232, Wifi and Ethernet for data collection from the device or sensors. It uses cellular LTE/4G/ 3G/ 2G, WiFi or Ethernet options for connecting to the Internet. It has a web based configuration and management console to configuration and provision the data collection mechanism from devices or sensors and setting up the cloud connectivity as part of IoT gateway.

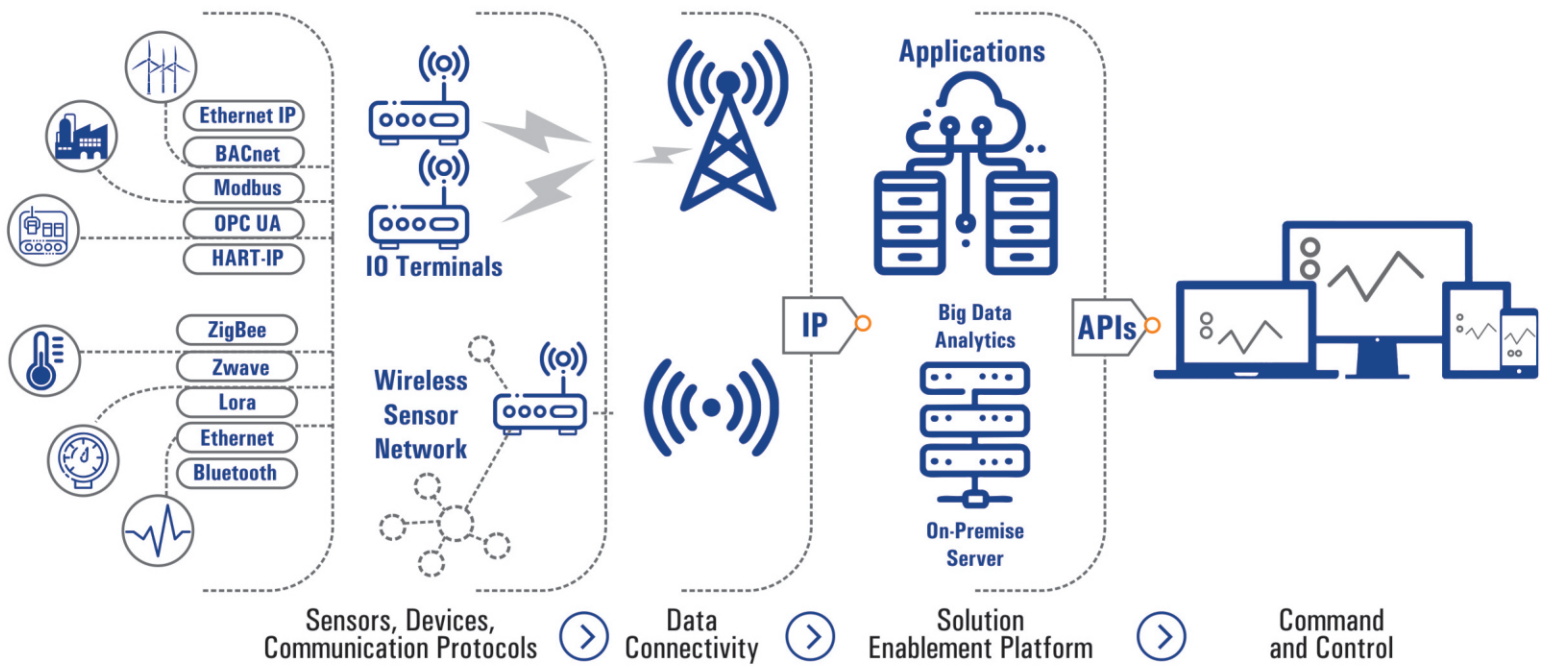
NPEX2 comes with an SDK for developing custom IoT gateway which can be integrated to a cloud server or on premise servers. Customers can develop applications on the SDK on their own or avail Nanomine Technolabes services to do the same.



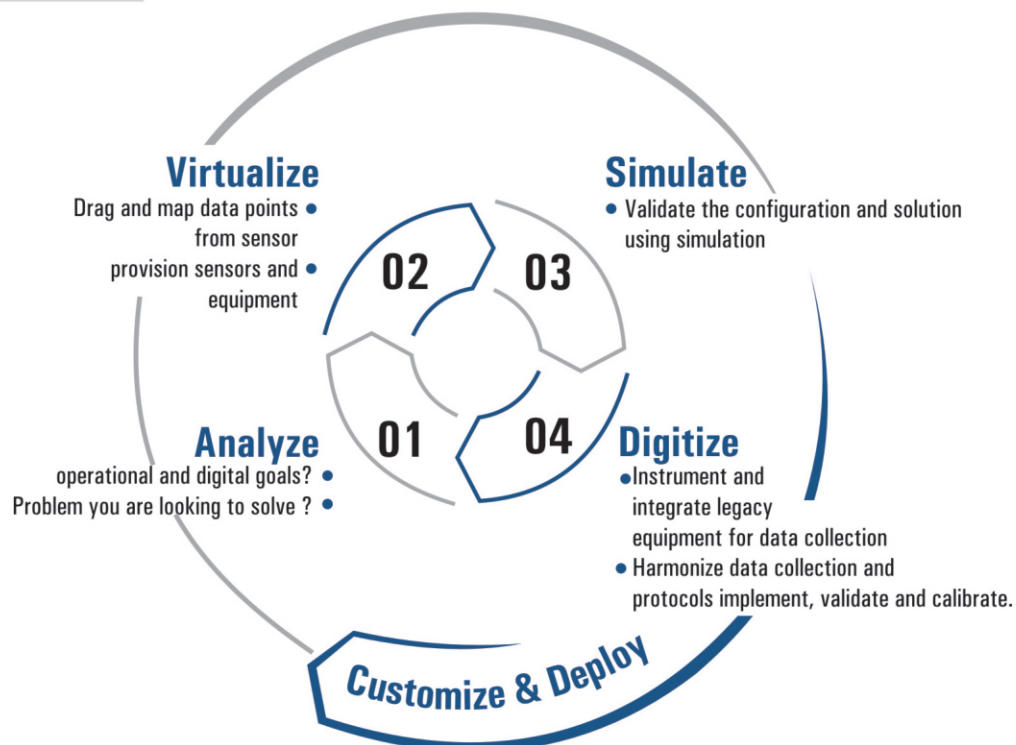
SPECIFICATIONS

Processor	MIPS CPU running at 580 MHz clock
Operating System	Linux OpenWRT based OS running Linux kernel v4.14
Memory	128/64MB DDR2 running @400MHz 32MB NOR Flash storage space
I/O	2 x Rs-485 Full/Half duplex 2 x RS-232 3 x 10/100 Mbps Ethernet (1xWAN; 2 x LAN) 1 x WiFi 802.11b/g/n 2.4GHz 1 x Cellular 4G/3G/2G, connectivity to Internet
Expansion	PCIe expansion slot supporting plug in wireless modules ZigBee 802.15.4/BLE/BT LoRA
Power Input	-48V isolated Power supply with reverse polarity protection with input range from 30-60v PoE Support
Software	Protocols support - RESTful APIs, MQTT, Modbus TCP/RTU, SNMP, FTP, HTTP, HTTPS Websocket Automatic switch over among 4G/3G/2G Web based configuration and management console Multiple SSIDs simultaneously on WiFi Integrated with third party ecosystems

How it Works



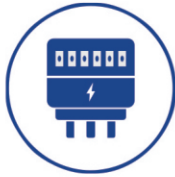
METHODOLOGY



APPLICATION



Remote Infrastructure
monitoring



Energy metering



Smart City and
environmental monitoring



Industrial
monitoring



agriculture
monitoring

OUR CLIENTS



ESSAR



ANUPAM RASAYAN INDIA LTD.



TechnipFMC

Intelligent Machine

CONTACT US



NANOMINE
TECHNOLABS

॥ अनुभवः वास्तविकतास्ति ॥

☎ +91 97222 03401
+91 99983 98995

📍 212, Royal Square, Utran,
Surat, Gujarat-394105

🌐 sales@nanominetechlabs.com

🌐 www.nanominetechlabs.com