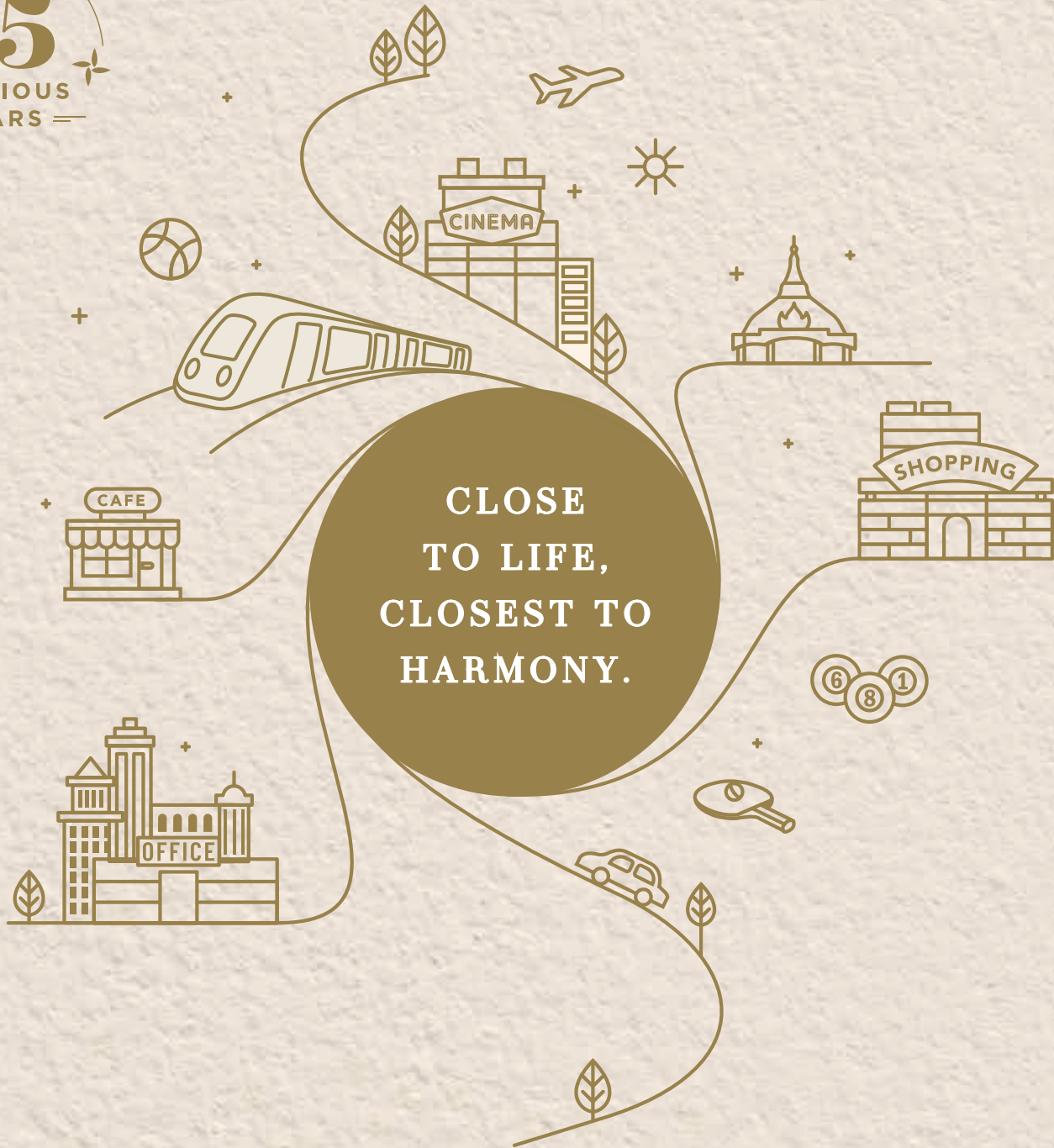


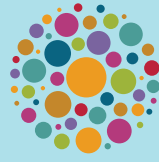
CELEBRATING
25
GLORIOUS
YEARS



marina
enclave

Close to life. Closest to harmony.

MALAD WEST



marina enclave

Close to life. Closest to harmony.



Where memories are created and dreams are fulfilled, Marina Enclave is the place that delivers an exclusive lifestyle full of luxuries and indulgences. Homes here are designed to perfection with room for all your family's dreams. A sea view that rejuvenates the mind, body and soul and a garden view designed to soothe your eyes are never-ending offerings that make life better every day. Marina Enclave takes a step back to let you focus on the finer details of life that contribute to a grand lifestyle at a location of premium importance.



Amenities & Solace

Marina Enclave brings you a range of best in class amenities along with 8 lifestyle zones that will cover every need that arises from life, leaving you mesmerised and relaxed. These zones include everything from spirituality, gaming, entertainment to personal wellness and much more. Pamper your mind, body and soul to the best and spend your life with your loved ones the way it's meant to be.



A glimpse of your everyday life



10,000 Sq.ft. of Modern Clubhouse



Well equipped Gymnasium



Swimming pool



Jogging track



Cycling track



Net cricket pitch



Mini-theatre for movie experience



Kindergarten



Landscaped garden



Banquet hall



Skating rink



Steam & Jacuzzi



Putting Green



Gazebos



Indoor games with table-tennis, carom, chess etc.



Yoga & meditation corner



Reflexology pathway



Library with spiritual books collection



Spiritual message wall



Open-air amphitheatre



Multipurpose court with badminton, volleyball, basketball



Supermarket

Luxury & Serenity

SEA VIEW HOMES



Actual Image

INDOOR GAMES



Actual Image

SWIMMING POOL



Actual Image

SQUASH COURT



Actual Image

GYMNASIUM



Actual Image

PUTTING GREEN



Artistic Image

BANQUET HALL



Actual Image

MINI THEATRE



Actual Image

Wing - K

TYPICAL FLOOR PLAN

2ND TO 7TH, 9TH TO 14TH & 16TH TO 23RD FLOOR



SR.NO.	TYPE	RERA	VIEW
1	2 BHK	727	Podium view
2	3 BHK	918	Sea view
3	2 BHK	716	Sea view
4	2 BHK	719	Podium view



Wing - L

TYPICAL FLOOR PLAN

2ND TO 7TH, 9TH TO 14TH & 16TH TO 23RD FLOOR



SR.NO.	TYPE	RERA	VIEW
1	2 BHK	718	Podium view
2	2 BHK	718	Podium view
3	2 BHK	716	Sea view
4	2 BHK	716	Sea view



Isometric View

2 BHK



Isometric View

3 BHK



Specifications



ELEVATION

- Breathtaking beautiful elevation
- 2 & 3 BHK luxurious apartments

VIEW

- Sea view apartments
- Garden view apartments

TOILETS

- Designer toilets
- Beam height dado
- Branded toilet accessories

WINDOWS

- Powder coated aluminium sliding windows
- Mosquito net panel

FLOORING

- Vitrified tiles in all rooms

KITCHEN

- Granite kitchen platform
- Service platform
- Beam height dado
- SS sink

ELECTRIFICATION

- Concealed copper wiring
- Branded switches
- Provision of A/C, Telephone, Cable & Internet connection
- Power backup for elevators & common areas





About Gurukrupa Group

Founded in 1994 & with its headquarters in Mumbai, Gurukrupa Group has forayed into every corner of Mumbai creating iconic and mesmerising structures including futuristic residential towers, shopping malls, commercial spaces & massive lifestyle communities. Erecting 3 to 5 lakh square feet of aesthetic marvels and creating homes that have room for not just your's but even your family's dreams every year.

From studio apartments to executive flats to premium family homes, Gurukrupa Group has made it's mark by delivering quality year on year. Having more than 25 years of hands-on experience in real estate & property building, we have constructed a plethora of residential & commercial projects including luxurious townships, modernised homes, advanced commercial complexes, shopping centres & much more.

Gurukrupa Group is proud to have designed and constructed over 20 lakh square feet of lustrous and beautiful homes in the most prime and sought after locations of Mumbai suburbs.

We are proud to be one of India's leading real estate developers committed to the highest standards of design, construction and service.

Taking environmental responsibilities is a must and we are highly dedicated and passionate about it. We at Gurukrupa Group ensure we take in utmost care and consideration while designing homes to make sure no harm is done to the environment.





Connectivity & Ease



Road

New Link Road- 2.6kms
 SV Road- 4.1kms
 Charkop Road- 1.6kms
 Marve Road- 1.4kms
 Western Expressway - 6.5kms



Railway

Kandivali Station - 4.5 km.
 Malad Station -5 km.



Airports

International -18kms
 Domestic -16kms



Proposed Connectivity

Under construction Metro
 Proposed Charkop Road
 Proposed Coastal Road



Business Centres

BKC - 25kms
 Powai -17kms
 Lower Parel - 29kms



Site Address: Marina Enclave Road, Behind Billabong School, Malad West, Mumbai 400095.

Corporate Office: A/205, Western Edge II, Near Western Express Highway, Behind Metro Mall, Borivali East, Mumbai 400066.

MahaRera No.: P51800007088 (Wing J, K & L) (<https://maharera.mahaonline.gov.in>)

Disclaimer: The plans, specifications, images and other details herein are only indicative and the developers reserve their rights to change any or all of these in the interest of the development. This printed material does not constitute an offer and or contract of any type between the developer and the recipient. Any purchase/ lessee of this development shall be governed by the terms and conditions of the agreement for sale/lease entered into between parties and no detail mentioned in this printed material shall in any way govern such transaction.