

Precision Machining Solutions



Company Profile



Flexell Engitech Private Limited is a precision CNC & VMC Machining solution provider focused in the field of Engineering Contract Manufacturing of Machined Components.

We cater to a wide range of Customer segments ranging from Machinery Manufacturers, OEM Suppliers, Exporters & Resellers of Components, Engineering R&D Divisions and many more.

At Flexell, we are committed to provide fast & efficient advanced Engineering & Manufacturing solutions with the latest and state of the art Technology and contemporary processes in Manufacturing.

We not only expertise in high volume contract manufacturing but also specialize in development work of non-standardized components required for research and development stages.

We also provide component assembly solutions and design consulting solutions for clients as per their requirements.

Infrastructure & Resources

The Company is situated on a 10,000 Sq. Ft. of Plot in GIDC Makarpura utilizing a built-up area of 12,000 Sq. Ft. in a 2 storied RCC Building. It has sufficient allocated areas for production, raw material storage & handling, finished product storage and dispatch as well as administrative offices.

The Company has a team of well qualified, well trained & well experienced work men serving and operating various machines. It also has sufficient & well qualified staff for Supervision and Quality Control.

State-of-the-art technology has been incorporated in the Company at all stages. Powerful computers and the latest software is being used for designing, programming and monitoring the production process at all stages.

The company is financially sound and enjoys credit facilities from Small Industries Development Bank of India (SIDBI) as well as consistent line of credit from its suppliers.



Equipment



CNC Horizontal Lathe Machines



The Company has CNC Machines manufactured by Lakshmi Machine Works (LMW), Coimbatore, which has a technical collaboration with M/s Mori Seiki Co. Ltd, of Japan. LMW is considered to be the No. 1 manufacturer of Indian Make CNC Machines.

The below mentioned machines have been installed with different technical specifications so as to enable the company to cater to customers with a requirement of wide range of sizes.

Title	Description	Unit	LL25T L5	LL20T L5	Smarturn
Capacity	Swing over carriage	mm	340	340	260
	Chuck dia, max.	mm	250	200	165
	Interference free turning diameter	mm	265	265	200
	Max. turning length	mm	480	500	262
	Admit between centres	mm	595	610	345
Spindle	Spindle nose	type	A2 - 6	A2 - 6	Flat (Dia 140)
	Hole through spindle	mm	77	61	53
	Spindle speed	rpm	3500	3500	4500
	Spindle motor power	kW	15 / 11	11 / 7.5	7.5 / 5.5
Feed system	Cross travel X-axis	mm	185	185	105
	Longitudinal travel Z-axis	mm	560	560	320
	Rapid traverse rate X/Z-axes	m/min	30 / 30	30/30	20 / 20
Turret	No. of stations	nos	8	8	8
	Tool shank size	mm	25x25	25x25	20 X 20
	Maximum boring bar dia	mm	40	40	32
	Turret indexing	type	Hydraulic	Hydraulic	Hydraulic
Tailstock	Quill dia	mm	75	75	65
	Quill stroke	mm	100	100	80
	Quill taper	-	MT-4	MT-4	MT-4
CNC system	Controller	-	Siemens	Fanuc	Fanuc

Equipment



Vertical Machining Center (VMC)

We have three Vertical Machining Centers from Cosmos Impex (India) Pvt Ltd with a host of additional customised features to bring versatility to our shop floor.

The CVM 640 & CVM 1060 series machines are one of the best Indian made machines by Cosmos with 25 years of rich experience in the field of imported machine tools.

One of the VMC Machine also has a 4th Axis Rotary Table which enables us to do some high accuracy milling jobs where angle accuracy is to be maintained.

CVM - 640 / CVM - 1060 Series

Additional Features & Accessories

- ▶ 4th Axis Interface with Card, Drive, Motor & Software
- ▶ CNC Rotary Table with Manual Tailstock
- ▶ 3 / 4 Jaw Manual Chuck with Adaptor Plate
- ▶ Chip Flushing System
- ▶ Base Plate for Mounting Rotary Table & Tailstock

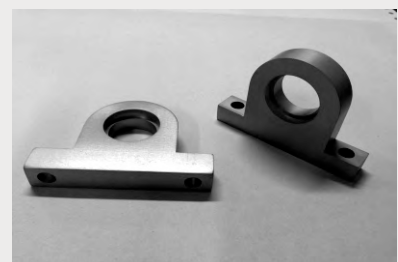
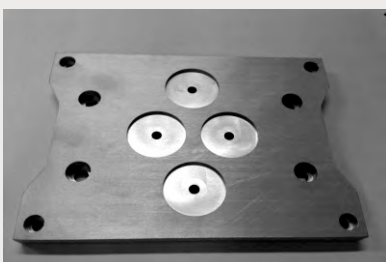
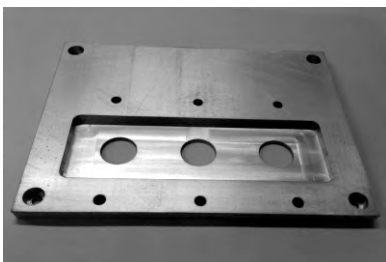
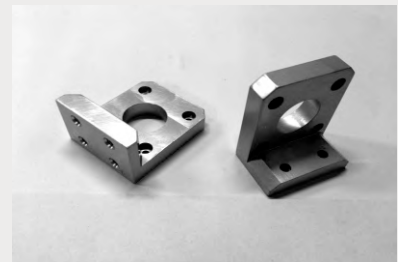
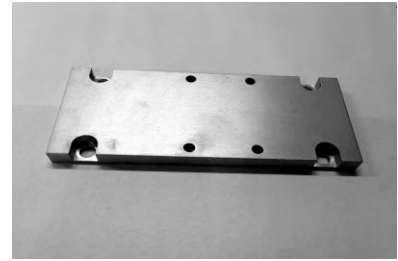
Technical Specifications

Category	Parameter	Model - 640	Model - 1060
Machine	X Axis	650 mm	1050 mm
	Y Axis	450 mm	610 mm
	Z Axis	500 mm	600 mm
	Spindle Nose to Table Surface	100 – 600 mm	125 – 725 mm
	Spindle Center to Column Surface	540 mm	690 mm
Table	Table Size	800 x 450 mm	1200 x 550 mm
	Table Loading Capacity	400 KGS	1000 KGS
Spindle	Motor	5.5 / 7.5 kw	7.5 / 11 kw
	Speed	8000 rpm	8000 rpm
	Spindle Nose	BT 40	BT 40
ATC	Tool Storage Capacity	24	24
	Max Tool Length	250 mm	250 mm
	Max Tool Weight	7 KGS	7 KGS
	Max Tool Diameter	80 mm	80 mm
	Max Tool Dia without adj. Tool	130 mm	130 mm
Feed	Tool Change Time	2.5 sec	2.5 sec
	Rapid Traverse X/Y/Z	36 m/min	30 m/min
Accuracy	Cutting Feed Rate X/Y/Z	10 m/min	10 m/min
	Positioning Accuracy	0.01	0.01
	Repeatability	± 0.003 mm	± 0.003 mm

Product Gallery - Turning Components



Product Gallery - Milling Components



Client Base

Some of the most renowned clients include the following:

- ▶ Larsen & Toubro Limited - Hazira Manufacturing Complex
- ▶ Larsen & Toubro Limited - Powai Division
- ▶ Siemens Ltd
- ▶ Alstom Bharat Forge
- ▶ Pakona Engineers (I) Pvt. Ltd.
- ▶ Cosmos Engitech Pvt. Ltd.
- ▶ Sameer Linkages (Export) Pvt. Ltd.
- ▶ Tega Industries (SEZ) Ltd.



Quality Control



Measuring Instruments

Quality of the production is being continuously monitored by our well trained supervisory staff along with regular co-ordination and approval from the client's end.

Modern Instruments which are mainly digital to reduce human error are being used to monitor the specifications of the produced output.

The following instruments are being used currently:

- ▶ Microfine Base Plate 600x600
- ▶ Analog Vernier Caliper (0 - 150 mm)
- ▶ Digital Vernier Caliper (0 - 150 mm)
- ▶ Digital Vernier Caliper (0 - 300 mm)
- ▶ Outside Micro Meter (0 - 25, 25 - 50, 50 - 75, 0 - 150, 150 - 300mm)
- ▶ Dial Height Gauge (300 mm)
- ▶ Bore Gauge (18-50, 50-100 mm)
- ▶ Plunger type Dial Gauge (0.01mm & 0.001 mm)
- ▶ Lever type Dial Gauge (0.01 mm & 0.001 mm)
- ▶ Digital Outside Micrometer (0 - 25)

Safety

Workmen Safety is the most important aspect in any heavy engineering industry. Adequate measures have been undertaken in the company to ensure the safety and comfort of its workmen. Use of safety gloves, eye-wear and footwear is strictly enforced for the protection of the workers. First-aid is readily available in case of an emergency and all the workmen are well trained in using the kit.



The logo for Flexell, featuring the word "FLEXELL" in a bold, orange, sans-serif font. The letters are slightly shadowed and set against a white background with a grey checkerboard pattern. The logo is positioned in the center of the page, below a large blue curved graphic on the left side.

FLEXELL

Flexell Engitech Pvt Ltd

**883/1, GIDC Estate, Makarpura,
Vadodara - 390010, Gujarat (INDIA)**

**Ph: +91-265-2649632 | 2649633
Mob: +91-9427602783 | 9427602784**

**E-mail: sales@flexell.co.in
Web: www.flexell.co.in**