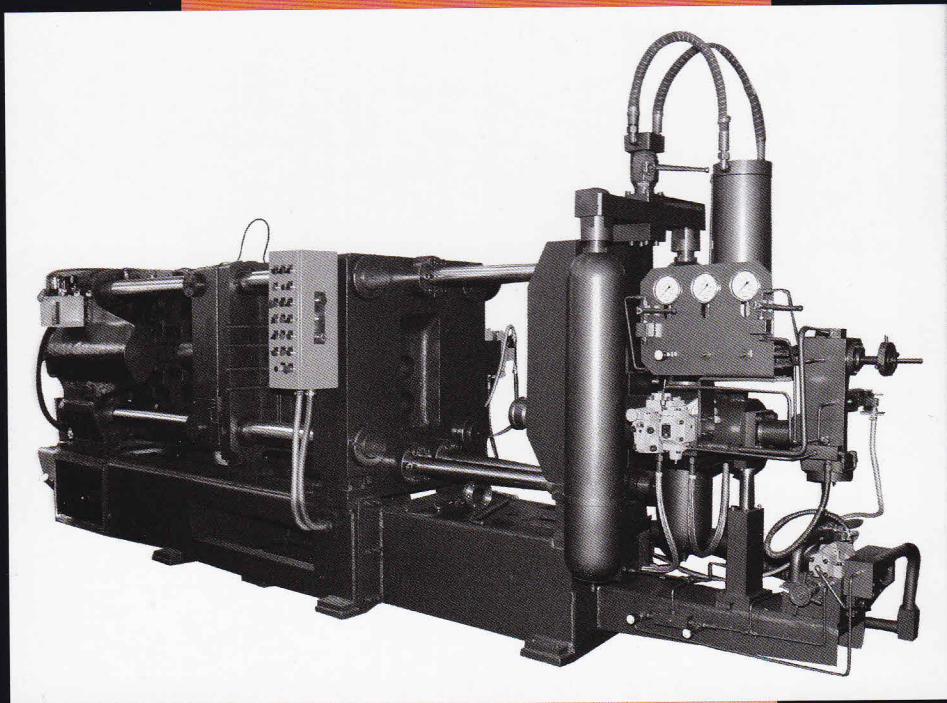




# SS SERIES 80 to 1100 TONNES



## **HORIZONTAL COLD CHAMBER PRESSURE DIE CASTING MACHINES**

**Your Ultimate Choice  
For Quality  
Die Casting**

SS DIE CASTING Machines cater to a wide range of applications. From simple components to high precision industrial components, these machines take care of most die-casting needs.

Built to high quality standards, these machines are subjected to stringent performance testing using advanced testing devices to ensure high performance, increased productivity and reliability.

## SPECIFICATIONS

MODEL	SS80.01	SS80.02	SS120.01	SS120.02	SS180.01	SS180.02	SS250	SS400	SS660	SS800	SS1100
Locking Force                      tonnes	80	80	120	120	180	180	250	400	660	800	1100
Die mounting plates (Vertxhoriz.)                      mm	520x520	530x530	555x600	610x680	680x690	780x800	800x850	920x980	1130x1190	1400x1400	1570x1568
Space between Tie-bars (HxV)                                      mm	330x330	350x350	380x410	430x430	430x450	500x550	500x550	580x640	720x780	900x900	995x995
Diameter of Tie-bars                      mm	60	60	65	65	80	80	100	120	150	180	205
Max. die thickness                      mm	400	400	450	450	600	600	750	750	880	1100	1150
Min. die thickness                      mm	200	150	150	150	200	200	225	200	350	400	370
Die opening stroke                      mm	200	350	375	375	350	350	500	600	630	1000	1000
Injection force adjustable (with intensifier)                      tonnes	6.7-9.5	11.5	13	13	20	30	37	43	65	80	100
Injection plunger stroke                      mm	250	250	275	275	300	300	350	400	600	650	700
Ejecting force                              tonnes	2.5	4	6	6	10	10	15	22	34	36	52
Ejector stroke                              mm	50	60	65	65	80	80	100	145	150	180	220
Motor input (400/400V) 50 cycle supply                      k.w	7.5	7.5	11	11	18.5	18.5	22.4	22.4	45	45	45x2
Time of minimum dry-cycle                                      sec.	7	7	7	7	7	7	7	7	7	10	10
Capacity of oil tank                      litres	300	300	350	350	470	470	550	550	1000	1350	1350
Machine weight                              tonnes	3.6	3.6	4	4	5	5	10	12.5	21	45	52

## STANDARD ACCESSORIES

- Set of Tools
- Foundation Bolts

*Marketing Office*

**S. S. ENGINEERING WORKS**

Plot No. 100 Sector-6, IMT Manesar, Gurgaon-122050 (Haryana)

Tel.: +91-124-4367328 / 4367329 / 4367330    Mobile : +91-9810078209

Email : ssengg1958@gmail.com, ashcharya.khanna@ssenggworks.com, ajit.khanna@ssenggworks.com

Website : www.ssenggworks.com, www.ssenggworks.co.in