

*Where dreams
come home.*



BLANCORA

Plot No. B-46, Sector-19B, Ulwe





EVONEA REALTICUS LLP

WOODLAND

THE BOOK

LOCATION FEATURES

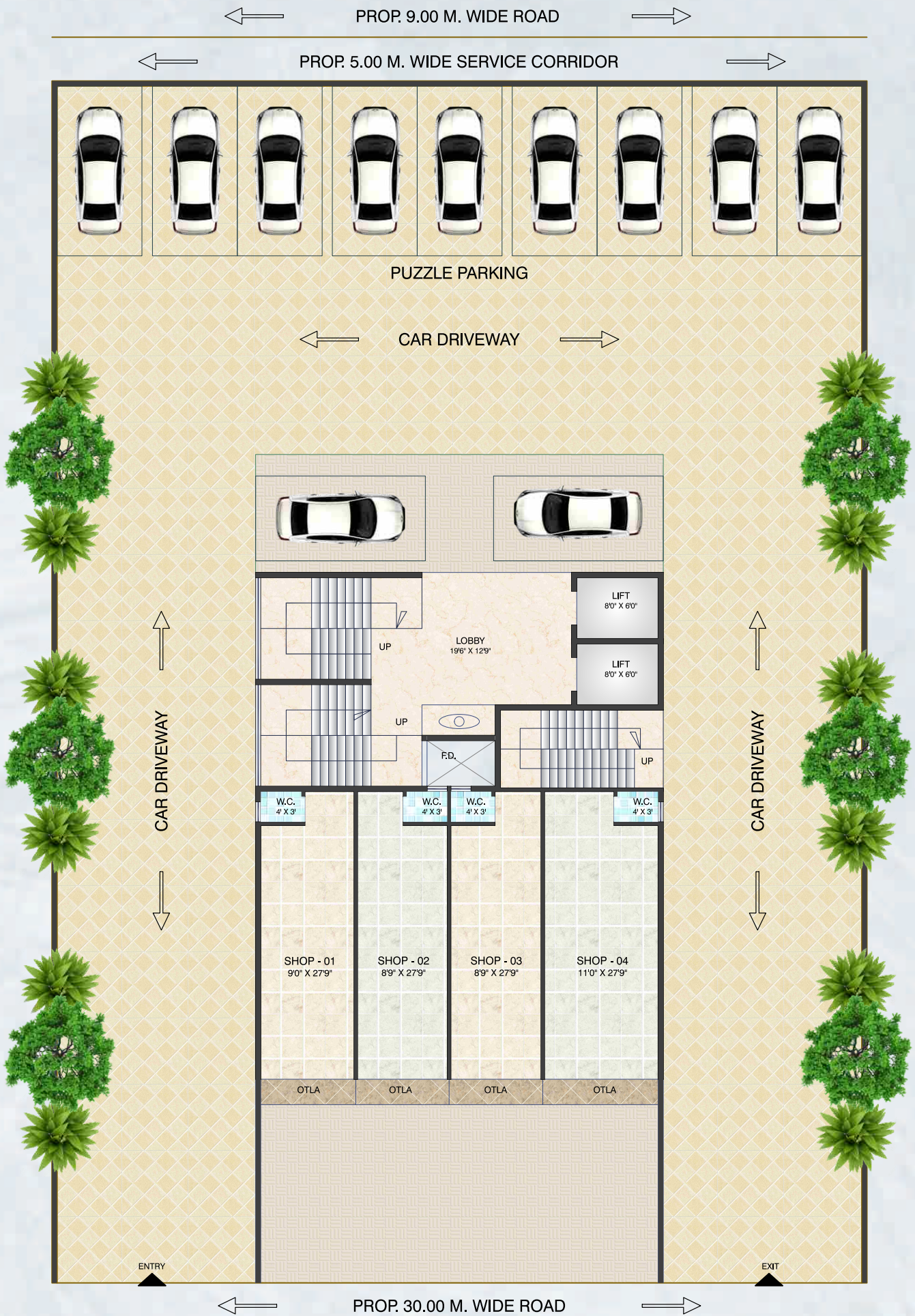
- Excellent Connectivity to Palm Beach Road, Mumbai - Pune Express Highway, CBD-Belapur, Nerul, Mumbai - Goa Highway, J.N.P.T. etc.
- 3 mins. Drive to Bamandongri Railway Station.
- 5 mins. Drive to Kharkopar Railway Station.
- 5 mins. Drive from the Proposed Navi Mumbai International Airport.
- 1 Km. away from Reliance SEZ
- 2.5 Km. away from Proposed Nhava Sheva-Sewree Sea Link.
- 7 mins. Drive from Existing Seawood Darave - CBD Belapur Rly. Line
- Banks, Markets, Hospitals, Schools, Colleges, Gardens, Play Grounds, Stadium, Railway Station, Mall & Multiplexes, Wonders Park, Restaurants, Hotels at Proximate Distance from the project site.



Royal Creation to Live your Dreams

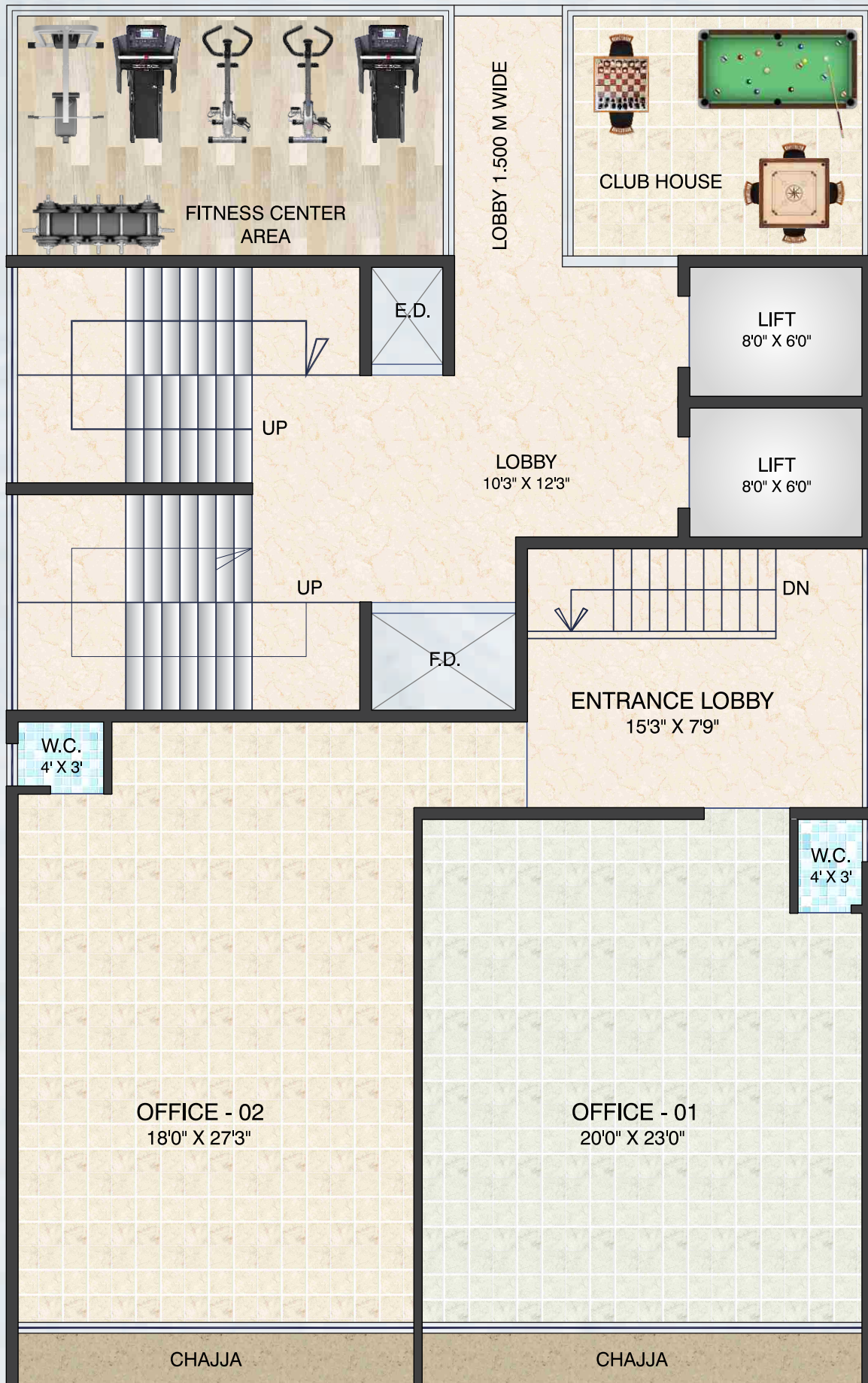
- Title Clear CIDCO Transfer Plot.
- Ground +13 Storied Residential Cum Commercial.
- Exclusive 2BHK Flats.
- Earthquake Resistant RCC Structure.
- Branded High Speed Elevators.
- Ample Space on Ground Floor for Parking.
- Power Backup for Lifts & Common Areas.
- CCTV Camera Surveillance.
- Intercom facility provided in every flat.
- Advanced & High Tech Fire Fighting System.
- 24 hours security guard with security cabin.
- Loans Available & Approved by Major Financial Institutions & Banks.

ULTRA-LUXURIOUS **2BHK** HOMES



GROUND FLOOR PLAN

1st FLOOR PLAN





2nd FLOOR PLAN

3rd, 5th, 7th FLOOR PLAN





4th, 6th FLOOR PLAN

8th, 9th, 10th, 11th FLOOR PLAN





12th FLOOR PLAN

13th FLOOR PLAN





AMENITIES

FLOORING

- 32 X 32 Vitrified flooring in all rooms.

KITCHEN

- Granite Kitchen Platform
- Stainless Steel Branded Sink.
- Provisions for Refrigerator, Mixer, Aquaguard, Washing Machine & Exhaust Fan Points.

DOORS & WINDOWS

- Decorative Laminated Flush Main.
- Doors with Wooden Frames.
- Powder Coated Aluminium Sliding.
- Windows with One way Glass.

BATH & WC

- Designer glazed tiles upto beam level.
- Concealed Plumbing with Premium Quality CP Fittings.
- Provision for Hot Water Geyser Point in all Bathrooms.

LIFT

- Lift of Reputed Company.

WALLS

- POP Gypsum finished internal walls.
- Emulsion paints for internal walls.
- Acrylic paints for external walls.

WATER

- Underground & Overhead Water Tank with Adequate Water Storage Capacity.

ELECTRIFICATION

- Concealed Polycab Brand Copper Wiring with Modular Switches of ISI Brand. TV point in Living Room, AC Point Provision In Bedroom.

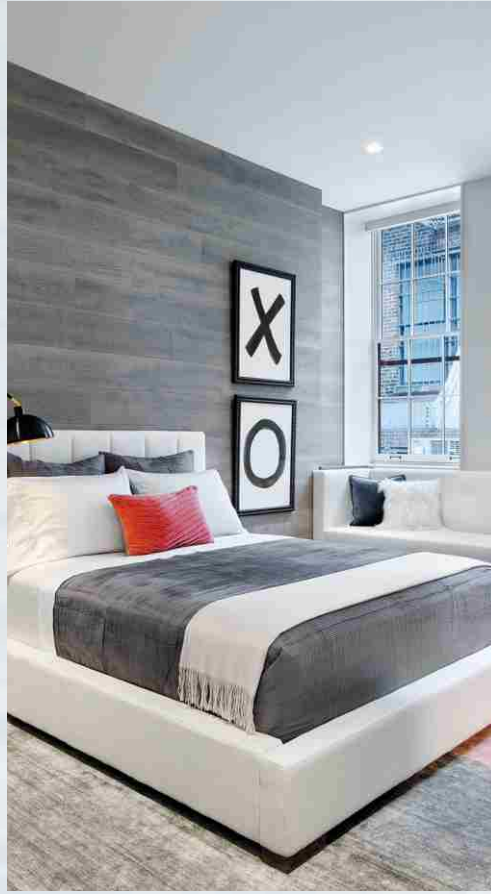
TERRACE

- Special Brickbat Water Proofing Flooring Treatment.

MODERN AMENITIES

- Club House
- Gym





GYMNASIUM



Adjoining Sector 23



Project By



EVONEA REALTICUS LLP

Your Property, Our Priority

Office Address: Plot No. B-46, Sector-19B, Ulwe, Navi Mumbai - 410206.

Email: evoneallp@gmail.com

Contact: 9833182250 / 8976338393

R.C.C. Consultant
Adharshilla Consultants



Maha RERA Reg. No. P52000025001

Details Available on <https://maharera.mahaonline.gov.in/>

Architect
Destination

Disclaimer : All Plans, Drawing, Amenities, Facilities Etc. Are subject to approval of the respective authorities. It may be changed, if necessary. This creation remains with the developer. All rendering Pictures & Maps are the artist's constructions & not actual depictions of the plot, roadways are landscaping. The brochure is for guidance & not a legal document. The brochure should also be reproduced, copied or made available in any form of transmission. The design & specification depicted in the brochure are subject to change without prior notice. Proposed development as mentioned in the brochure is subject to approval of complete authorities.