



**ZEPPI**<sup>®</sup>  
ELECTRIC MOTORS  
Customer's Satisfaction Is Our Profit

#लगाओ **ZEPPI**  
रहो **HAPPY**



# A.C. INDUCTION MOTORS

**TEFC (TOTALLY ENCLOSED FAN COOLED)  
THREE PHASE & SINGLE PHASE SQUIRREL CAGE**

# ▶ THREE PHASE INDUCTION MOTORS ◀



IE2 HIGH EFFICIENCY CAST IRON  
(FOOT MOUNTED)  
RANGE : 0.25HP to 50.0HP



IE2 HIGH EFFICIENCY CAST IRON  
(FLANGE MOUNTED)  
RANGE : 0.25HP to 50.0HP



IE2 HIGH EFFICIENCY ALUMINIUM BODY  
(FOOT MOUNTED)  
RANGE : 0.25HP to 2.0HP



IE2 HIGH EFFICIENCY ALUMINIUM BODY  
(FLANGE MOUNTED)  
RANGE : 0.25HP to 2.0HP



IE2 HIGH EFFICIENCY CAST IRON BODY  
(FOOT & FLANGE MOUNTED)  
(AC BRAKE MOTORS)  
RANGE : 0.25HP to 50.0HP



IE2 HIGH EFFICIENCY ALUMINIUM BODY  
(FOOT & FLANGE MOUNTED )  
(DC BRAKE MOTORS)  
RANGE : 0.25HP to 2.0HP

IS : 12615



IP55

CM/L-9700142416

IE2 | High Efficiency | IE3 | Premium Efficiency

➡ **IE2 HIGH EFFICIENCY** ⬅

➡ **THREE PHASE INDUCTION MOTOR** ⬅



## OPERATING CONDITIONS

● Voltage Variation	:	415V (±10%)
● Frequency Variation	:	50Hz (±5%)
● Duty Cycle	:	S1/ Continuous
● Enclosure	:	TEFC (Totally Enclosed Fan Cooled)
● Insulation Class	:	"F" & "H"
● Ambient Temperature	:	50° C
● Direction of Rotation	:	Clock wise & Anti Clock wise as seen from Drive end Side
● Degree of Protection	:	IP 44 & IP 55
● Cooling Method	:	IC 411 (Shaft Mounted Fan)
● Altitude	:	Should be lower than 1000 meters Above Sea level

## FEATURES

- High Power Factor.
- High Torque Level.
- High Efficiency and Long Life Product.
- Minimum Copper losses due to use of electrolytic grade of copper.
- Minimum Friction losses.
- Easy maintenance.
- Minimum Pay Back Period.
- Low Temperature Rise.
- Motors are fitted with dynamically balanced aluminium die cast squirrel cage rotors.

## APPLICATION

- Air Compressor.
- Domestic Floor Mills, Rolling Mills.
- Plastic Machinery.
- Wood Working Machinery.
- Lathe Machine.
- Power Press, Hydraulic Press.
- Textile Machinery, Blower & Varied Machines Tools.
- Material Handling Equipment, Diamond Machinery.
- Food Processing Machinery, Belt Conveyor Etc..

# ▶ SINGLE PHASE INDUCTION MOTOR ◀



HIGH EFFICIENCY  
Cast Iron Body  
(0.5HP TO 5HP)



HIGH EFFICIENCY  
Sheet Metal Body  
(0.5HP TO 2HP)



HIGH EFFICIENCY  
Aluminium Motor  
(0.25HP TO 1HP)



SINGLE PHASE & THREE PHASE  
COOLANT PUMP  
(0.11 KW TO 0.75 KW)

## Operating Conditions

● Frame Size	:	80 to 132
● Rating	:	0.18 kw to 3.7 kw
● Voltage Variation	:	230V (±6%)
● Frequency	:	50Hz (±3%)
● Mounting	:	Foot Mounted (B3)
● Speed	:	1440 RPM
● Cooling	:	IC 411 (Fan mounted on shaft)
● Insulation Class	:	"F"
● Ambient Temperature	:	50° C
● Protection	:	IP 44
● Duty Cycle	:	S1 (continuous)

IP44



15 996 : 2019  
CH/L-9700173419

# ➡ GEAR BOX ⬅



## NMRV WORM REDUCER

Size : 030-040-050-063-075-090-110-130-150  
Power : 0.06 to 11 kw  
Reduction ratios : between 5 and 100  
Cases : up to 90 in die-cast aluminum alloy, Cast Iron  
All Units are Supplied Complete with synthetic oil



## R SERIES HELICAL GEAR REDUCER (HORIZONTAL)

Power range : 0.12-160kw  
Output Speed : 0.16-1028RPM  
Output Torque : up to 23000N.m  
Mounting Type : Foot Mounting  
Reduction Stage : 2 stage & 3 stage



## NU TYPE WORM GEARBOX

Range : Power Range up to 250 kw  
Sizes : 10 : 1Up to 100 : 1  
Ratio : NU 2.5 " Up to NU 10"  
Type : Under Driven / Oriven / Vertical Units in Single & Double Reduction.  
Application : Conveyor, Alleviator, Ball Mill, Agitators, Cranes, Paper Mill, Ceramic, Lift Gearbox  
Industries : Ceramic, Paper Mill etc.



## PLANETARY STARRER GEAR

Range : From 0.75 kw TO 355 kw  
Ratio : Ratio : 3:1 to 5000:1  
Type : Planetary Gear / Vertical Gear  
Industries : Material Handling, Pharma, Packaging, Food Processing, Ceramic etc.



## CYCLOID GEAR REDUCER (HORIZONTAL)

Range : 0.50 HP to 100 HP  
Ratio : 11:1, 17:1, 23:1, 29:1, 35:1, 43:, 59:1, 71:1, 87:1  
Type : XWD/JXJ Series  
Application : Line / Kiln / Convair & All Ceramic Industrial  
Industries : Material Handling, Pharma, Packaging, Food Processing, Ceramic etc.

## ➡ 3 PHASE COOLING TOWER MOTORS ⚡

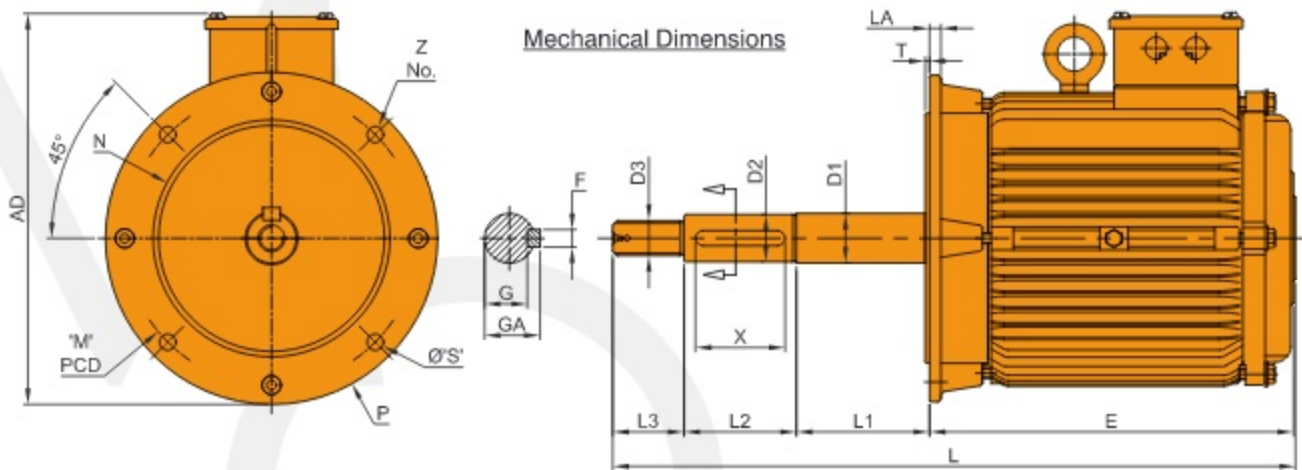
### ➡ ELECTRICAL & MECHANICAL DATA ⚡

- **RANGE** : Standard 3 Phase Cooling Tower Motors with rating 0.18 KW to 30.0 KW are available from frame size 63 F to 225 F with Standard Speeds.
- **STANDARDS** : Performance conforms to IS:12615:2018.
- **RATINGS** : Motors are rated for continuous duty type S1 at an ambient of 45 Deg. C and site altitudes of upto 1000 M above mean sea level.
- **VOLTAGE AND FREQUENCY** : Motors designed are for a rated voltage of 415 V +/- 10%, 3 Phase, 50 Hz +/- 5% supply. Motors with special designs of Voltage/Frequency can be offered on request.
- **PAINT** : Cooling Tower Motors are provided with EPOXY paint to ensure long life of external surface.
- **CONSTRUCTION** : Cooling Tower Motors are specially designed flange mounted in totally enclosed constructions.
- **INSULATION SYSTEM** : All Cooling Tower Motors are provided with class "F" insulation system.
- **DEGREE OF PROTECTION** : All Cooling Tower Motors are having IP 55 Protection to avoid water ingress.
- **TERMINAL BOX** : All Cooling Tower Motors are provided with terminal box on the top front as seen from the non-drive end.
- **NOISE** : Motors are designed for low noise level in accordance with IS 12065.
- **BEARING SYSTEM** : All Motors having double shielded ball bearings.
- **EARTHING TERMINALS** : Earthing Terminals are provided on the stator housing or in Terminal Box in all motors.
- **MATERIAL OF CONSTRUCTION** : All Cooling Tower Motors are in CI material.

Due to continuous Research & Development, design and specifications are subject to change without notice.



## DIMENSION OF COOLING TOWER MOTOR (B5 CONSTRUCTION)



#All Dimensions are in M.M.

FRAME	D1	D2	D3	G	GA	L	L1	L2	L3	E	F	P	M	N	S	Z	T	LA	X	AD
63	12	11	M10	8.5	12.5	24.5	35.5	25	30	155	4	140	115	95	10	4	3	9	20	185
71	15	14	M12	11	16	278	40	30	30	178	5	160	130	110	10	4	3.5	9	25	195
80	20	18	M16	15.5	21.5	347	55	50	45	197	6	200	165	130	12	4	3.5	10	35	224
90S	30	28	M24	24	31	459	112	55	60	232	8	200	165	130	12	4	3.5	11	45	232
90L	30	28	M24	24	31	484	112	55	60	257	8	200	165	130	12	4	3.5	11	45	232
100L	30	28	M24	24	31	486	112	55	60	259	8	250	215	180	15	4	4	11	45	285
112M	30	28	M24	24	31	505	112	55	60	278	8	250	215	180	15	4	4	11	45	296
112-132	40	38	M30	33	41	508	90	75	65	278	10	300	265	230	15	4	4	13	70	292
132S	40	38	M30	33	41	535	90	75	65	305	10	300	265	230	15	4	4	13	70	338
132M	40	38	M30	33	41	573	90	75	65	343	10	300	265	230	15	4	4	13	70	338
132-160	45	42	M30	37	45	573	90	75	65	343	12	350	300	250	19	4	5	15	65	336
160M	45	42	M30	37	45	644	90	75	65	414	12	350	300	250	19	4	5	15	65	395
160L	45	42	M30	37	45	688	90	75	65	458	12	350	300	250	19	4	5	15	65	395
180L	50	48	M30	42.5	51.5	811	100	105	65	541	14	350	300	250	19	4	5	15	100	430
200L	60	55	M30	49	59	835	100	105	69	561	16	400	350	300	19	4	5	16	100	480
225S & M	65	60	M30	54	64	879	100	130	69	580	16	450	400	350	19	8	5	20	100	540

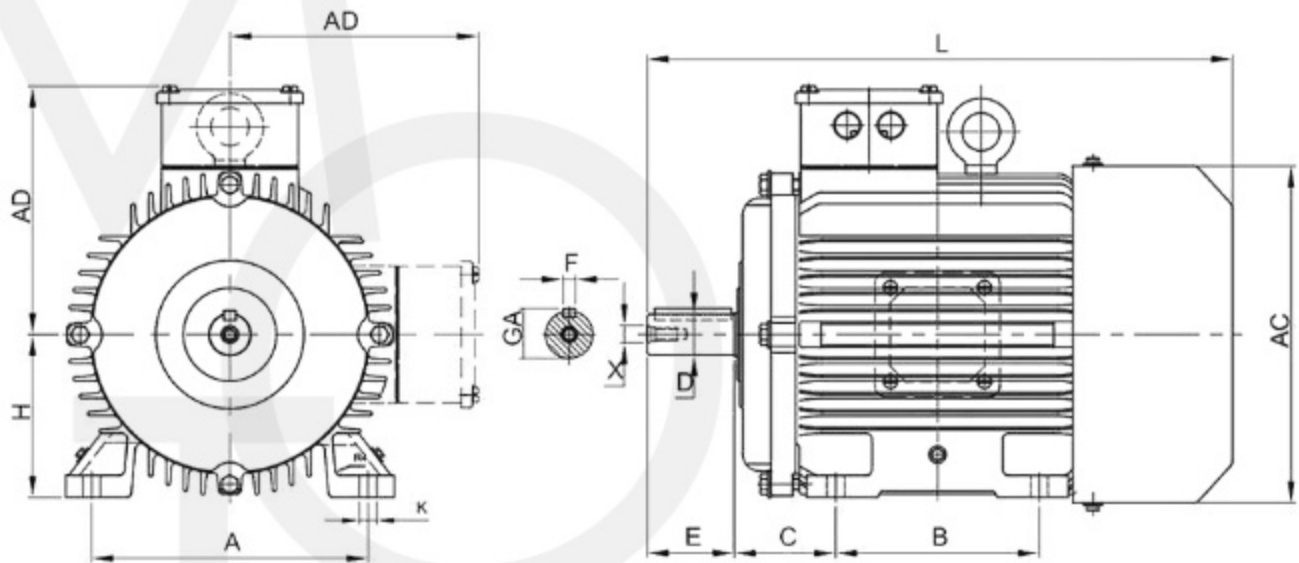
\*All figure are subject to tolerance as per IS:12615:2018 | Design and specification are subject to change without prior notice

### PRODUCT RANGE

Power	0.25 Hp to 40 Hp (0.18kw to 30 kw)
Frame Size	63 F to 225 M
Voltage	415 V $\pm$ 10% or as required
Insulation	Class 'F'
Type of Duty	S1
Ambient Temp.	45° cel.

Polarity	4P, 6P, 8P, 10P, 12P
Mounting	Flange mounted (B5)
Frequency	50 Hz $\pm$ 5% or as require
Protection	IP 55
Enclosure	Totally enclosed (TE)
Temp.rise	As per Insulation class 'B'

## ▶ FOOT MOUNTED (IM B3) OUTLINE DIMENSION ◀

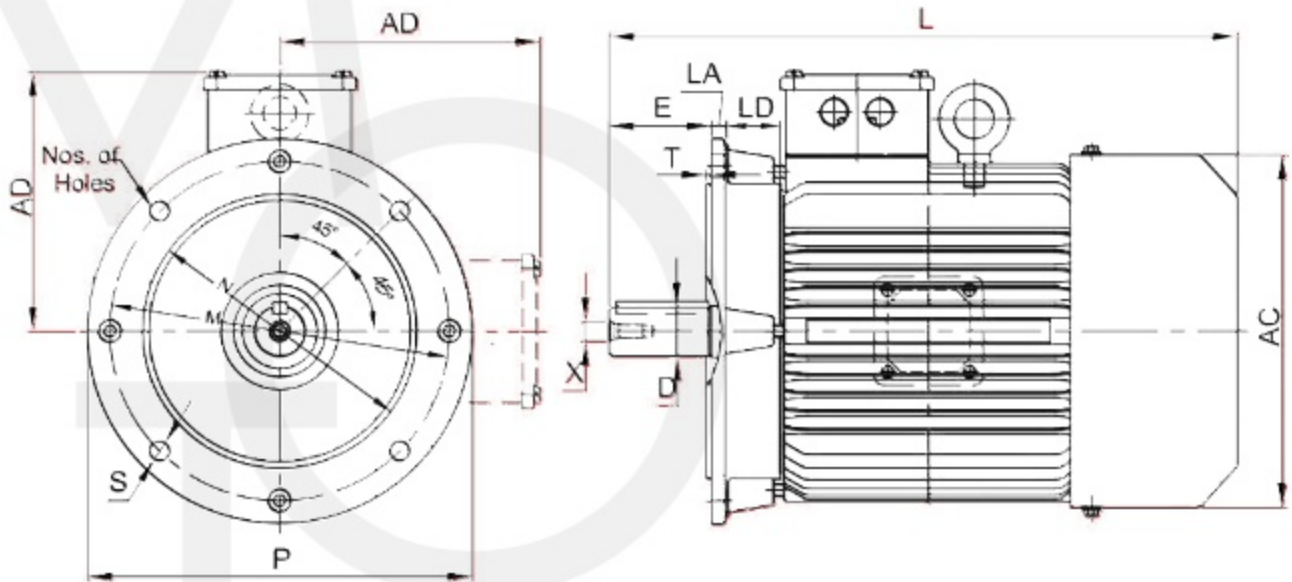


Frame Size ->	71	80	90-S	90-L	100-L	112-M	132-S	132-M	160-M	160-L	180M	180L	200L
H	71	80	90	90	100	112	132	132	160	160	180	180	200
A	112	125	140	140	160	190	216	216	254	254	279	279	318
B	90	100	100	125	140	140	140	178	210	254	241	279	305
C	45	50	56	56	63	70	89	89	108	108	121	121	133
D	14	19	24	24	28	28	38	38	42	42	48	48	55
E	30	40	50	50	60	60	80	80	110	110	110	110	110
F	5	6	8	8	8	8	10	10	12	12	14	14	16
GA	16	21.5	27	27	31	31	41	41	45	45	51.5	51.5	59
GD	5	6	7	7	7	7	8	8	8	8	9	9	10
ED	26	35	44	44	54	54	70	70	100	100	100	100	100
AA	27	35	42.5	38	47	52	56	45	60	60	78	78	86
AB	137	155	179	179	200	232	260	250	301	301	348	348	402
BB	132	151	140.5	172	192	194	196	215	319	319	298	328	348
K	7	10	10	10	12	12	12	12	15	15	15	15	19
HD	190	210	230	222	252	272	315	345	400	400	430	430	480
HA	10.5	12.5	12	15	17	20	19	16.5	25	25	26	26	32
AG	115	115	115	115	126	126	126	166	166	166	260	260	260
L	265	294	313	344	383	400	478	216	620	620	702	742	786
LL	105	105	105	105	126	126	126	166	166	166	155	155	155
AC	140	161	177	177	197	218	264	265	306	306	355	355	392

Note :- All Dimensions are in MM.



## ▶▶ FOOT MOUNTED (IM B5) OUTLINE DIMENSION ◀◀



Size :	71	80	90-S	90-L	100-L	112-M	132-S	132-M	160-M	160-L	180M	180L	200L
<b>M</b>	130	165	165	165	215	215	265	265	300	300	250	250	300
<b>N</b>	110	130	130	130	180	180	230	230	250	250	300	300	350
<b>P</b>	160	200	200	200	250	250	300	300	350	350	350	350	400
<b>D</b>	14	19	24	24	28	28	38	38	42	42	48	48	55
<b>E</b>	30	40	50	50	60	60	80	80	110	110	110	110	110
<b>ED</b>	26	35	44	44	54	54	70	70	100	100	100	100	100
<b>F</b>	5	6	8	8	8	8	10	10	12	12	14	14	16
<b>GA</b>	16	21.5	27	27	31	31	41	41	45	45	51.5	51.5	59
<b>GD</b>	5	6	8	8	8	8	10	10	12	12	9	9	10
<b>LA</b>	10	14	11	11	14	14	14	14	19	19	13	13	15
<b>LD</b>	18	9.75	18	18	19	29	41	41	41	41	32	32	32
<b>T</b>	3.5	3.5	3.5	3.5	4	4	4	4	5	5	5	5	5
<b>S</b>	10	12	12	12	15	15	15	15	19	19	19	19	19
<b>AD</b>	114	104	105	105	110	134	198	224	236	236	250	250	280
<b>AG</b>	115	115	115	115	126	126	126	166	166	166	260	260	260
<b>L</b>	296	296	343	343	384	384	453	510	605	605	714	745	801
<b>LL</b>	105	105	105	105	126	126	166	166	166	166	155	155	155
<b>LB</b>	264	252	293	293	324	324	383	430	495	495	604	644	691
<b>AC</b>	140	161	117	117	197	218	264	265	306	306	355	355	392

Note :- All Dimensions are in MM.

# ENSURING ENERGY EFFICIENT

## Associated Companies



A Unit Of Shafting  
P. Patel Industries



A Unit Of Casting  
Prabha Metal Cast



A Unit of Manufacturing  
Zeppi Electric Motors

For Service

☎ 81603 05093

✉ [service.zeppielectricmotors@gmail.com](mailto:service.zeppielectricmotors@gmail.com)



VOCAL  
FOR  
LOCAL



Survey No.22, Yamuna Industrial Area, B/h. Satyanarayan  
Weight-Bridge, Tata Motors Street, Gondal Road, Vavdi, Rajkot, Gujarat.

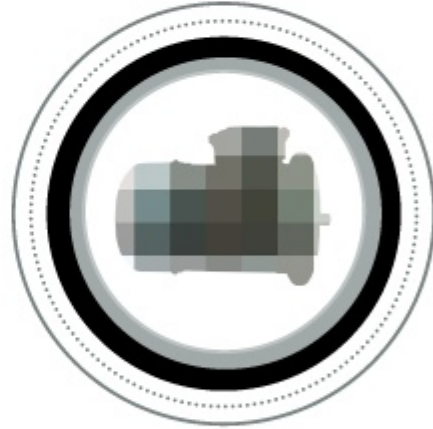


## Authorised Distributor

NU - TYPE WORM (CI)  
NMRV TYPE WORM (AL)  
IN - LINE HELICAL & CYCLODIAL

# ALL-IM – Series Gearbox

**Low RPM with High Efficiency**



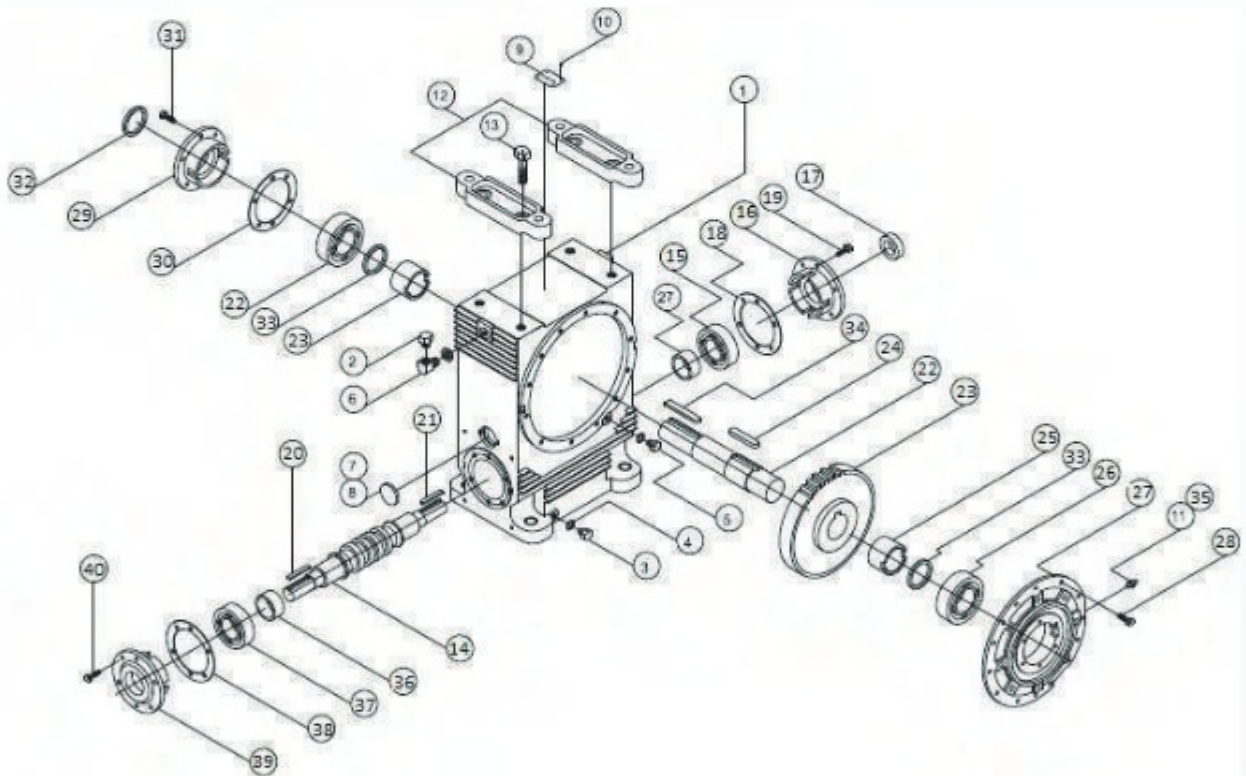


## NU - TYPE WORM (CI)

### PREFACE

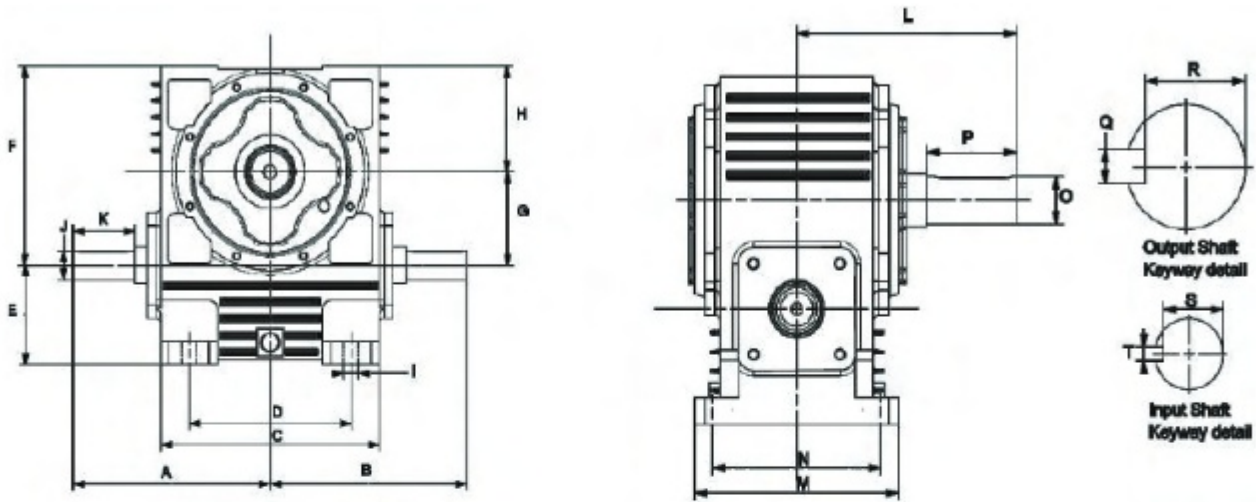
All types of industries are invariably required to install different types of electric motors as prime mover for driving process equipment participating in their respective production line up. The continuous process of technical development has resulted into availability of highly diversified types of electric motors. Having mastered the art of providing quality products, **ZEPPI ELECTRIC MOTORS** proudly introduces **TEFC ENERGY EFFICIENT INDUCUTION MOTORS** and **GEAR SPEED REDUCERS** Designed to meet diverse needs of future industry. Built from the motor industry's most successful modular platform, each module is designed to match a broad variety of demanding application requirements while having the flexibility to be adapted to highly specific configurations.

### ASSEMBLY DRAWING



1.	Gear Case	11.	Straight Greece Nipple	21.	Key On Ext.	31.	Hex Had Screw
2.	Breather Plug	12.	Feet	22.	Slow Speed Shaft	32.	Oil Seal
3.	Drain Plug	13.	Hex	23.	Worm Wheel	33.	Baffle Plate
4.	Nylon Washer	14.	Worm Shaft	24.	Key For Worm Wheel	34.	Key On Ext.
5.	Oil Level Indicator	15.	Tapper Roller	25.	Distance Piece	35.	Plug
6.	Elbow	16.	Open cover	26.	Taper Roller Bearing	36.	Bearing House
7.	Sealing Cap	17.	Oil Seal	27.	Bearing House	37.	Bearing
8.	Sealing Cap	18.	Shims	28.	Hex Head Screw	38.	Oil Seal
9.	Name Plate	19.	Hex Hed Screw	29.	Open Cover	39.	Open Cover
10.	Rivet	20.	Key	30.	Shims	40.	Screw

## DIMENSIONS



Size	A	B	C	D	E	F	G	H	I	J	K	L	M	N	O	P	Q	R	S	T
2"	133	133	142	95	70	133	50	83	11	16	47	128	125	100	25	57	8	21	13	5
3"	155	155	180	140	102	181	76	105	14	25	50	175	192	160	38	75	10	33	21	8
4"	225	225	250	185	108	216	101	115	18	32	70	215	200	160	42	88	14	39	27	10
5"	254	254	300	220	118	267	127	140	18	35	70	231	260	200	45	95	14	44	30	10
6"	279	279	350	266	127	323	152	171	23	38	75	276	300	241	50	122	16	47	32	10
7"	311	311	400	306	146	378	177	201	23	40	82	286	340	266	60	132	18	52	33	12
8"	348	348	440	343	146	428	203	225	27	45	88	312	340	266	70	140	20	57	44	14

### Note:

**Please Fill This Gearbox with 320 Graded Oil.**

## **SELECTION TABLE**

### **INPUT RPM 1500**

Size	Ratio	Motor Selection	Size	Ratio	Motor Selection
2"	10:1	1hp	3"	10:1	1.5/2hp
	15:1				
	20:1				
	30:1				
	40:1				
	50:1	0.5hp		50:1	1hp
	60:1				
4"	10:1	3hp	5"	10:1	5hp
	15:1				
	20:1				
	30:1				
	40:1				
	50:1	2hp		50:1	3hp
	60:1				
6"	10:1	7.5hp	8"	10:1	10hp
	15:1				
	20:1				
	30:1				
	40:1				
	50:1	5hp		50:1	7.5hp
	60:1				

### **Average weight of gear box: -**

Gear Box Size	Weight (without oil)
2"	11
3"	29
4"	66
5"	95
6"	155
7"	225
8"	285

### **Oil capacity of gear box: -**

Gear Box Size	Oil Capacity (ltr)
2"	1
3"	2
4"	3.5
5"	5
6"	7
7"	12
8"	14

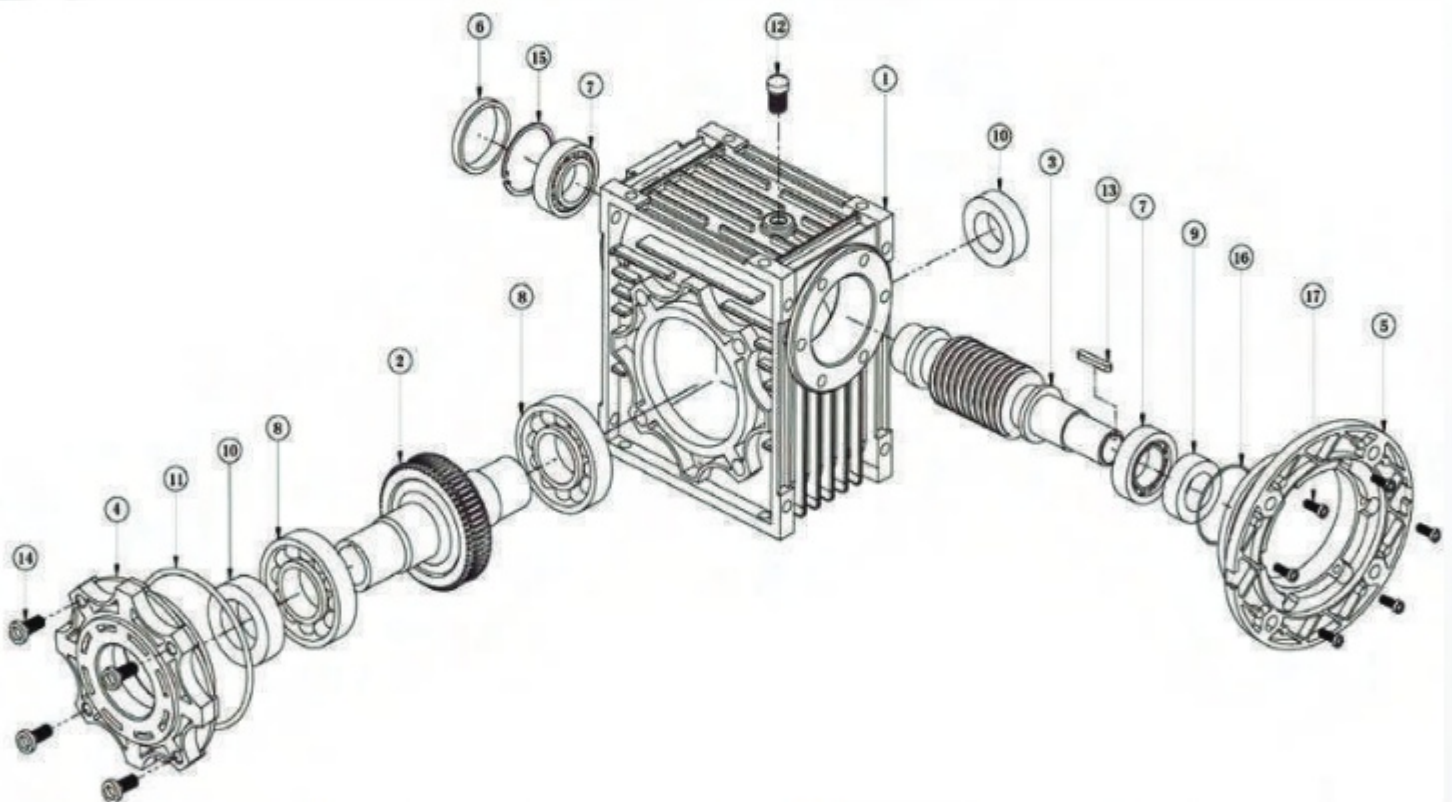


## PREFACE

## **NMRV TYPE WORM (AL)**

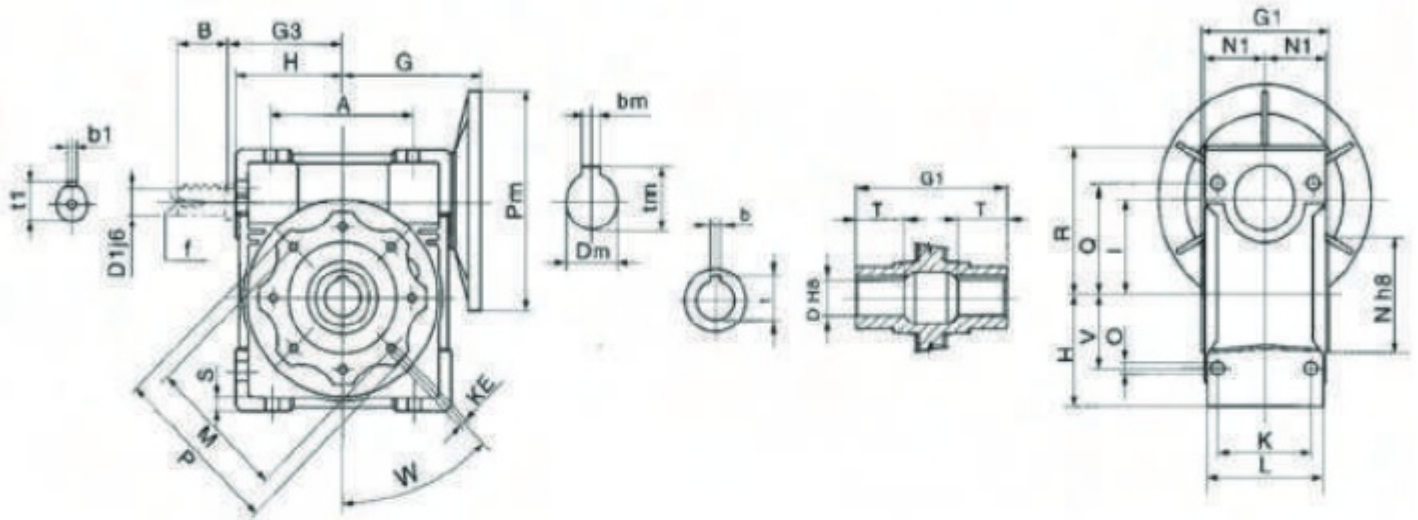
One-piece gear case, with external ribs, is made of close-grained cast iron and provides for rigid gear and bearing support. It also offers excellent heat dissipation. Double lip, spring-loaded seals guard against oil leakage and prevent dirt from entering. Stepped shafts with oversized ball and tapered roller bearings. Carbon steel shafts for greater strength. High tensile strength cast bronze worm wheel and hardened and ground alloy steel worm made integral with the shaft for - long and trouble-free life. Every unit test run prior to shipment. Universal mounting with bolt-on feet. Highly modifiable design. All this at substantially lower prices than you have been accustomed to paying for reducers of lesser quality.

## ASSEMBLY DRAWING



1.	Frame	10.	Oil Seal
2.	Worm Wheel	11.	O-ring
3.	Worm Shaft	12.	Oil Plug
4.	O/P Shaft Cover	13.	Key
5.	Flange	14.	Key Screw
6.	Seal Cover	15.	Snap Ring
7.	Bearing	16.	O-ring
8.	Bearing	17.	Hex Screw
9.	Oil Seal		

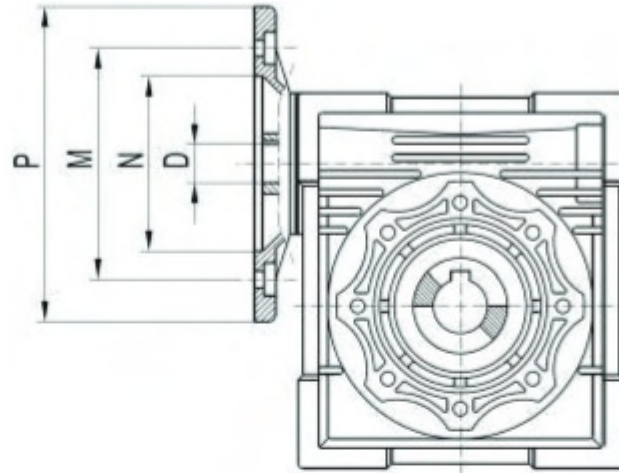
## DIMENSIONS



Details	Gear Box Size							
	40	50	63	75	90	110	130	150
<b>A</b>	70	80	100	120	140	170	200	240
<b>B</b>	23	30	40	50	50	60	80	80
<b>D</b>	18	25	25	28	35	42	45	50
<b>D1</b>	14	14	19	24	24	28	30	35
<b>G</b>	70	80	95	112.5	129.5	160	180	210
<b>G1</b>	78	92	112	120	140	155	170	200
<b>G3</b>	53	64	75	90	108	135	155	192
<b>H</b>	50	60	72	86	103	127.5	147	170
<b>I</b>	40	50	63	75	90	110	130	150
<b>K</b>	60	70	85	90	100	115	120	145
<b>KE</b>	M6*10	M8*10	M8*14	M8*14	M10*18	M10*20	M12*21	M12*21
<b>L</b>	71	85	103	112	130	144	155	185
<b>M</b>	75	85	95	115	130	165	215	215
<b>N</b>	60	70	80	95	110	130	180	180
<b>N1</b>	73	87	106	114	134	148	162	192
<b>O</b>	6.5	8.5	8.5	11.5	13	14	16	18
<b>P</b>	87	100	110	140	160	200	250	250
<b>Q</b>	55	64	80	93	102	125	140	180
<b>R</b>	71.5	84	102	119	135	167.5	187.5	230
<b>S</b>	6.5	7	8	10	11	12	15.5	18
<b>T1</b>	26	30	36	40	45	49	57.5	70
<b>V</b>	35	40	50	60	70	85	100	120
<b>W</b>	45	45	45	45	45	45	45	45
<b>s</b>	6	8	8	8	10	12	14	14
<b>T2</b>	20.8	28.3	28.3	31.3	38.3	45.3	48.8	53.8
<b>b1</b>	4	5	6	8	8	8	8	10
<b>t1</b>	12.5	16	21.5	27	27	31	33	38
<b>F</b>	-	M16	M6	M8	M8	M10	M10	M12



## Input flange and shaft:

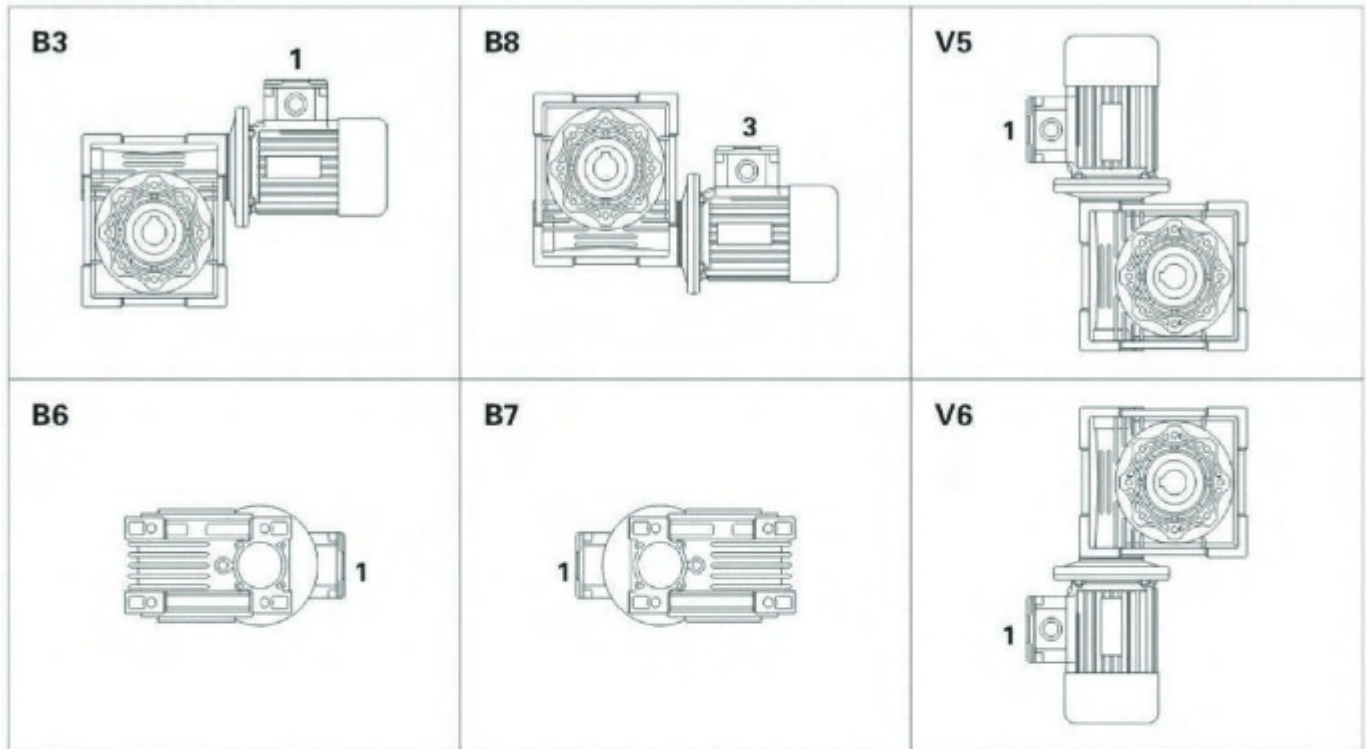


Box	HP	N	M	P	D										
					7.5	10	15	20	25	30	40	50	60	80	100
40	0.5	110	130	160	14	14	14	14	14	14	14	-	-	-	-
	0.25	95	115	140	11	11	11	11	11	11	11	11	11	11	11
	0.17	80	100	120	-	-	-	-	-	-	-	9	9	9	9
50	1	130	165	200	19	19	19	19	19	19	-	-	-	-	-
	0.5	110	130	160	14	14	14	14	14	14	14	14	14	14	-
	0.25	95	115	140	-	-	-	-	-	-	-	11	11	11	11
63	1.5/2	130	168	200	24	24	24	24	24	24	-	-	-	-	-
	1	130	168	200	19	19	19	19	19	19	19	19	19	-	-
	0.5	110	130	160	-	-	-	-	-	-	14	14	14	14	14
75	3/5	180	215	250	28	28	28	-	-	-	-	-	-	-	-
	1.5/2	130	165	200	24	24	24	24	24	24	24	-	-	-	-
	1	130	165	200	-	-	-	19	19	19	19	19	19	19	19
	0.5	110	130	160	-	-	-	-	-	-	-	14	14	14	14
90	3/5	180	215	250	28	28	28	28	28	28	-	-	-	-	-
	1.5/2	130	165	200	24	24	24	24	24	24	24	24	24	24	-
	1	130	165	200	-	-	-	-	-	-	-	19	19	19	19
110	7.5/10	230	265	300	38	38	38	38	-	-	-	-	-	-	-
	3/5	180	215	250	28	28	28	28	28	28	28	28	28	-	-
	1.5/2	130	165	200	-	-	-	-	24	24	24	24	24	24	24
	1	130	165	200	-	-	-	-	-	-	-	-	-	-	19
130	7.5/10	230	265	300	38	38	38	38	38	38	38	-	-	-	-
	3/5	180	215	250	-	-	-	-	28	28	28	28	28	28	28
	1.5/2	130	165	200	-	-	-	-	-	-	-	-	-	24	24
150	15/20	250	300	350	42	42	42	42	-	-	-	-	-	-	-
	7.5/10	230	265	300	-	-	-	38	38	38	38	38	-	-	-
	3/5	180	215	250	-	-	-	-	-	-	-	28	28	28	28

## SELECTION GUIDE

Size	Ratio	Motor Selection	Size	Ratio	Motor Selection
40mm	7.5:1	0.25hp 4p	50mm	7.5:1	0.5hp 4p
	10:1			10:1	
	15:1			15:1	
	20:1			20:1	
	25:1			25:1	
	30:1			30:1	
	40:1	0.17hp 4p		40:1	0.25hp 4p
	50:1			50:1	
	60:1			60:1	
	80:1			80:1	
100:1		100:1			
63mm	7.5:1	1hp 4p	75mm	7.5:1	2hp 4p / 1.5hp 4p
	10:1			10:1	
	15:1			15:1	
	20:1			20:1	
	25:1			25:1	
	30:1			30:1	
	40:1	0.5hp 4p		40:1	1hp 4p
	50:1			50:1	
	60:1			60:1	
	80:1			80:1	
100:1		100:1			
90mm	7.5:1	3hp 4p	110mm	7.5:1	5hp 4p
	10:1			10:1	
	15:1			15:1	
	20:1			20:1	
	25:1			25:1	
	30:1			30:1	
	40:1	2hp 4p / 1.5hp 4p		40:1	3hp 4p
	50:1			50:1	
	60:1			60:1	
	80:1			80:1	
100:1		100:1			
130mm	7.5:1	7.5hp 4p / 10hp 4p	150mm	7.5:1	15hp 4p
	10:1			10:1	
	15:1			15:1	
	20:1			20:1	
	25:1			25:1	
	30:1			30:1	
	40:1	5hp 4p		40:1	7.5hp 4p / 10hp 4p
	50:1			50:1	
	60:1			60:1	
	80:1			80:1	
100:1		100:1			

## Different mounting positions



## Kilo Gram & Oil Capacity

<b>Size</b>	<b>40</b>	<b>50</b>	<b>63</b>	<b>75</b>	<b>90</b>	<b>110</b>	<b>130</b>
<b>Ltr</b>	0.08	0.15	0.3	0.55	1	3	4.5
<b>Size</b>	<b>40</b>	<b>50</b>	<b>63</b>	<b>75</b>	<b>90</b>	<b>110</b>	<b>130</b>
<b>Weight</b>	2.3	3.5	6.2	9	13	35	48

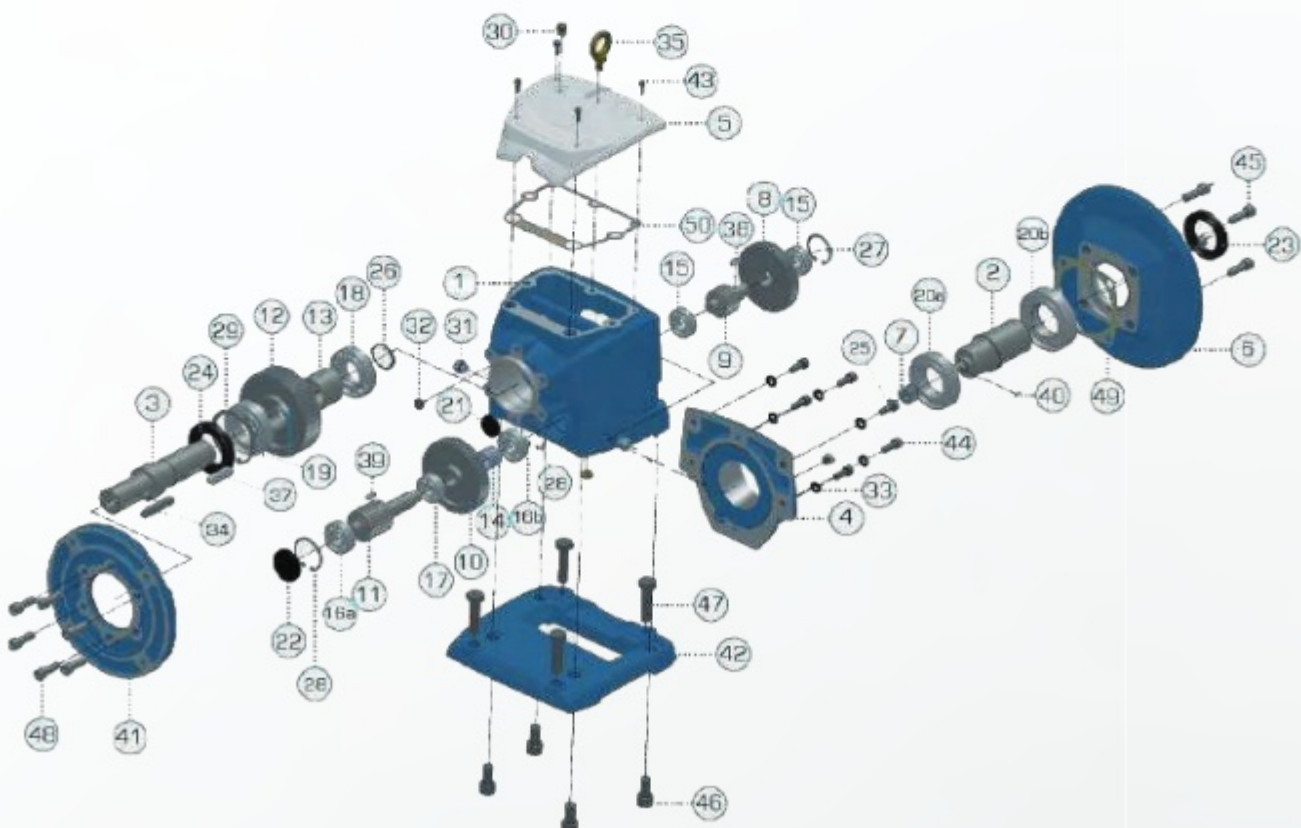


## PREFACE      IN - LINE HELICAL & CYCLODIAL

ITH - Series Inline Helical Geared motors in Double/ Triple reduction models having motorized /solid inputs are intended to satisfy all the requirements of a reliable drive for slow-speed high-torque application. Standard range of ZEPPI helical geared motors, available in foot-mounted and flange -mounted versions, offer UN-parallel performance covering output speed graduated from 5 to 329 rpm with motor power ratings ranging from 0.37 kW to 3.7 kW.

## ASSEMBLY DRAWING

1.	Housing	11.	Pinion	21.	Plug Seal	31.	Filler Plug	43.	Screw
2.	I/P Shaft	12.	Gear	22.	Plug Seal	32.	Level Plug	44.	Screw
3.	O/P Shaft	13.	Snap Ring	23.	Oil Seal	34.	Key	45.	Screw
4.	Input Cover	14.	Spacer	24.	Oil Seal	35.	Eye Bolt	48.	Screw
5.	Top Cover	15.	Bearing	25.	Snap Ring	36.	Gasket	49.	Gasket
6.	I/P Flange	16.	Bearing	26.	Snap Ring	37.	Key	50.	Gasket
7.	Pinion	17.	Bearing	27.	Snap Ring	38.	Key		
8.	Gear	18.	Bearing	28.	Snap Ring	39.	Key		
9.	Pinion	19.	Bearing	29.	Snap Ring	40.	Key		
10.	Gear	20.	Bearing	30.	Breather Plug	41.	O/P Flange		



## SELECTION TABLE

ITH-102	
Ratio	HP
6:1	0.5 / 1
11:1	0.5 / 1
14:1	0.5 / 1
18:1	0.5 / 1
26:1	0.5
30:1	0.5
36:1	0.5

ITH-128	
Ratio	HP
6:1	0.5 / 1 / 1.5 / 2
11:1	0.5 / 1 / 1.5 / 2
14:1	0.5 / 1 / 1.5 / 2
19:1	0.5 / 1 / 1.5 / 2
22:1	0.5 / 1 / 1.5 / 2
26:1	0.5 / 1
34:1	0.5 / 1
45:1	0.5 / 1

ITH-162	
Ratio	HP
11:1	1.5 / 2 / 3 / 5
14:1	1.5 / 2 / 3 / 5
19:1	1.5 / 2 / 3 / 5
24:1	1.5 / 2 / 3
28:1	1.5 / 2 / 3
34:1	1.5 / 2 / 3
45:1	1.5 / 2 / 3
55:1	1.5 / 2

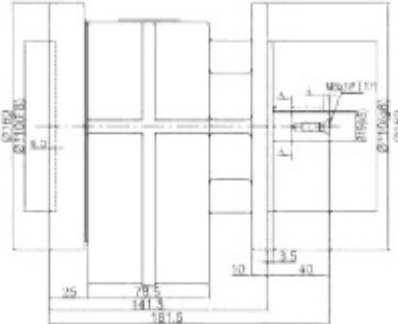
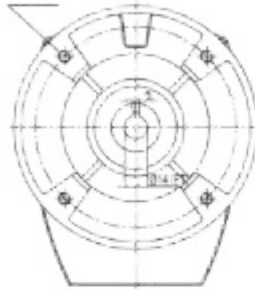
ITH-142	
Ratio	HP
6:1	1 / 1.5 / 2 / 3
11:1	1 / 1.5 / 2 / 3
15:1	1 / 1.5 / 2
19:1	1 / 1.5 / 2
22:1	1 / 1.5 / 2
26:1	1 / 1.5 / 2
36:1	1 / 1.5 / 2
45:1	1 / 1.5
54:1	1

ITH-182	
Ratio	HP
6:1	3 / 5 / 7.5
10:1	3 / 5 / 7.5
15:1	3 / 5 / 7.5
19:1	3 / 5 / 7.5
24:1	3 / 5
28:1	3 / 5
32:1	3 / 5

## DIMENSIONS

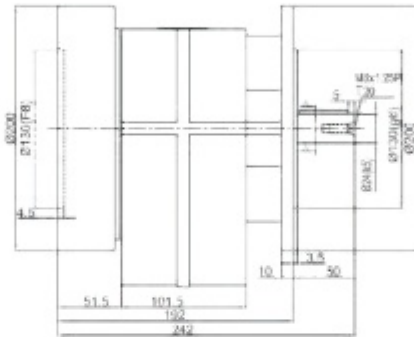
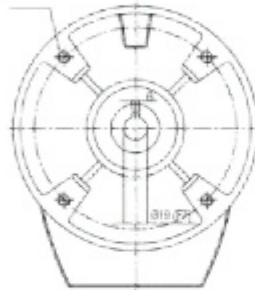
4 Holes of M8 x 1.25 P x 18 Deep  
Equispaced on  $130 \pm 0.1$  PCD  
for motor mounting

**ITH 102**



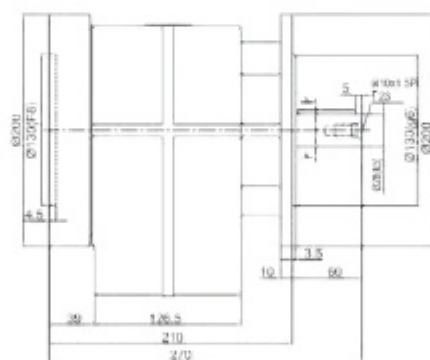
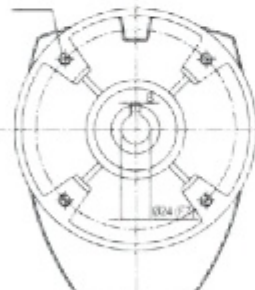
4 Holes of M10 x 1.5 P x 21 Deep  
Equispaced on  $165 \pm 0.1$  PCD  
for motor mounting

**ITH 128**



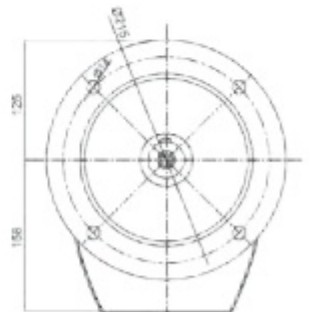
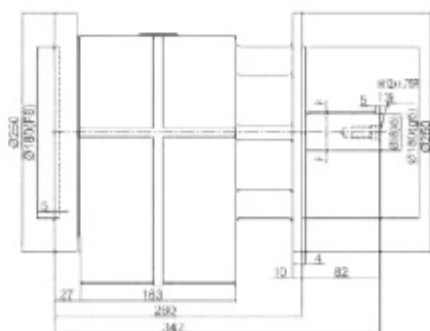
4 Holes of M10 x 1.5 P x 21 Deep  
Equispaced on  $165 \pm 0.1$  PCD  
for motor mounting

**ITH 142**



4 Holes of M12 x 1.75 P x 15 Deep  
Equispaced on  $215 \pm 0.1$  PCD  
for Motor Mounting

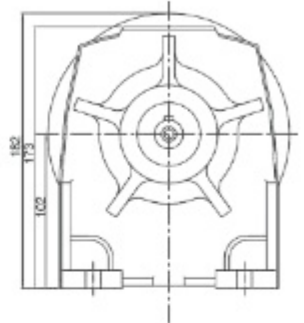
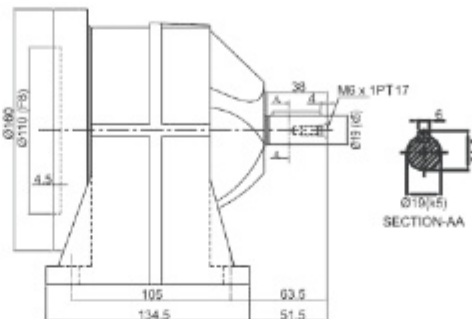
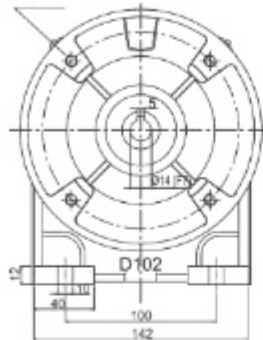
**ITH 162**



## DIMENSIONS

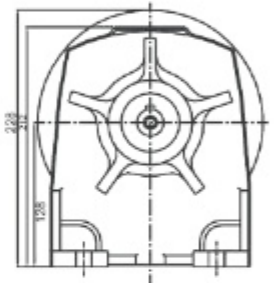
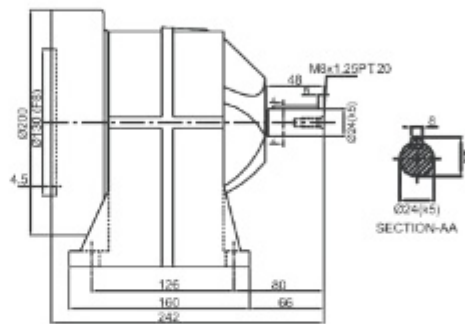
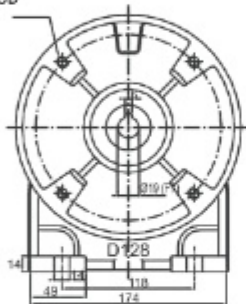
4 Holes of M8 x 1.25 P x 18 Deep  
 Equispaced on  $130 \pm 0.1$  PCD  
 for motor mounting

### ITH 102



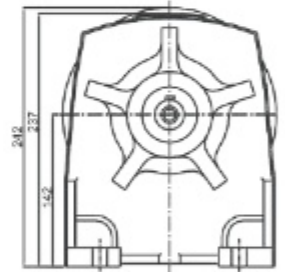
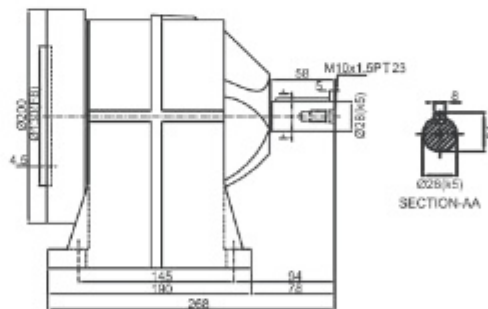
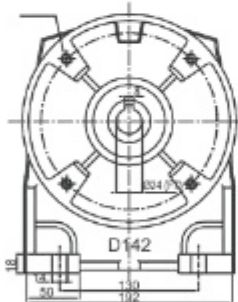
4 Holes of M10 x 1.5 P x 21 Deep  
 Equispaced on  $165 \pm 0.1$  PCD  
 for Motor Mounting

### ITH 128



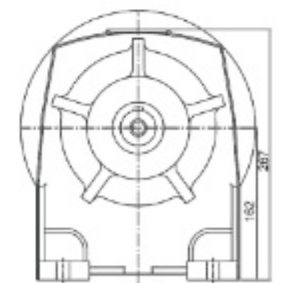
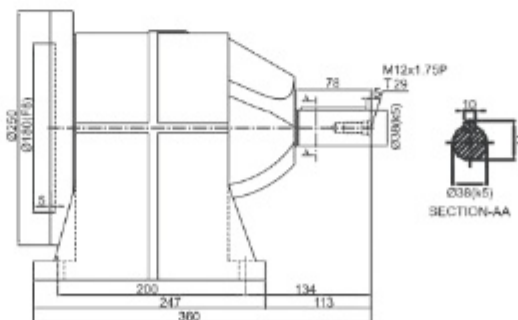
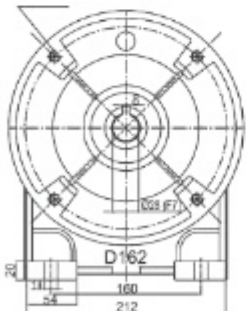
4 Holes of M10x1.5 Px21 Deep  
 Equispaced on  $165 \pm 0.1$  PCD  
 for Motor Mounting

### ITH 142



4 Holes of M12x1.75 Px15 Deep  
 Equispaced on  $215 \pm 0.1$  PCD  
 for Motor Mounting

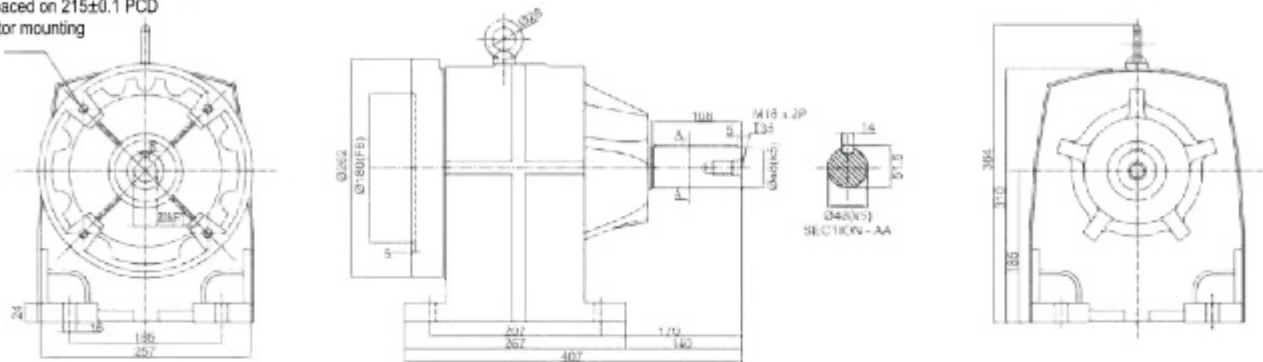
### ITH 162



## DIMENSIONS

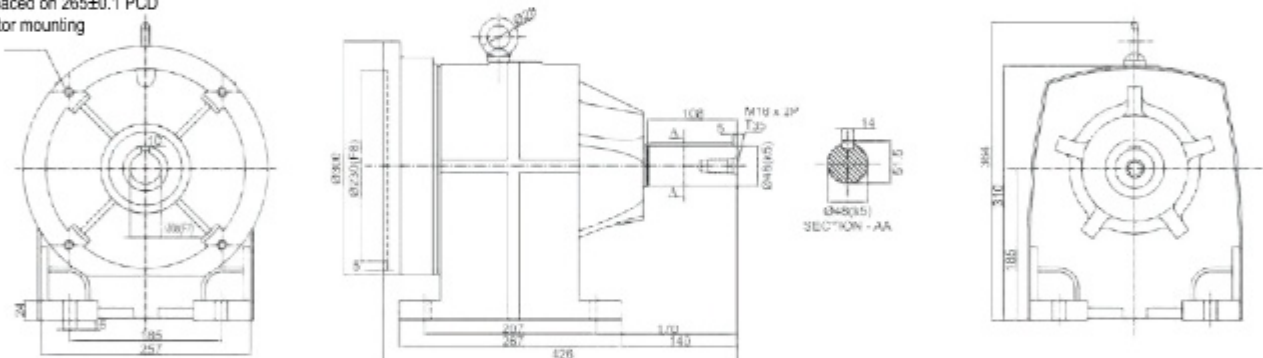
### INPUT POWER 4 kW

4 Holes of M12 x 1.75 P x 14 Deep  
 Equispaced on 215±0.1 PCD  
 for motor mounting



### INPUT POWER 5.5 kW

4 Holes of M12 x 1.75 P x 25 Deep  
 Equispaced on 265±0.1 PCD  
 for motor mounting

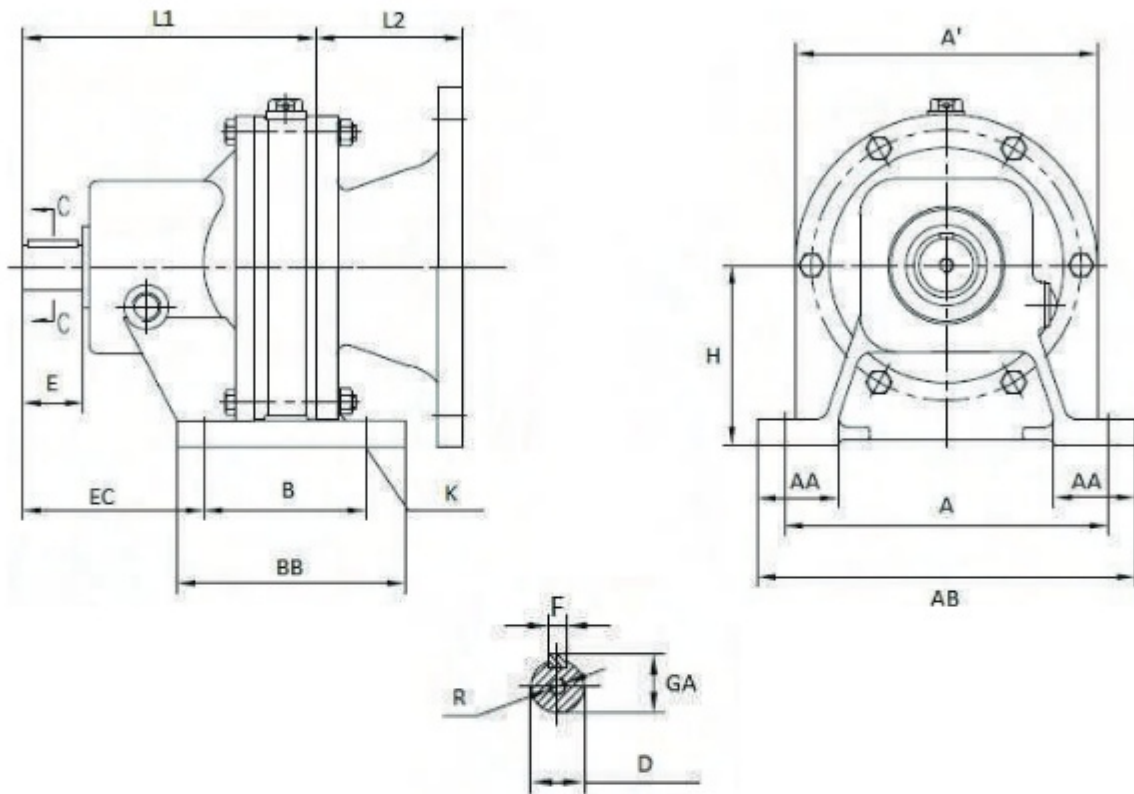


## SELECTION TABLE: RATIO AND TORQUE

Model	J0		J1		J2		J3	
H.P.	0.5 HP	1 HP	1 HP	2 HP	3 HP	5 HP	7.5 HP	10 HP
Ratio	TORQUE							
11	26 NM	53 NM	53 NM	109 NM	160 NM	270 NM	401 NM	547 NM
17	42 NM	84 NM	84 NM	170 NM	238 NM	417 NM	620 NM	845 NM
23	114 NM	114 NM	101 NM	228 NM	335 NM	564 NM	838 NM	1143 NM
29	71 NM	144 NM	144 NM	288 NM	423 NM	711 NM	1057 NM	1442 NM
43	105 NM	213 NM	213 NM	427 NM	627 NM	1054 NM	1567 NM	2137 NM
59	144 NM	293 NM	293 NM	586 NM	860 NM	1446 NM	2150 NM	2932 NM



## DIMENSIONS



Series	J0		J1		J2		J3	
HP/ Mounting	0.5/7 1B5	1/80 B5	1/80 B5	2/90L B5	3/100L B5	5/112M B5	7.5/132S B5	10/132M B5
<b>L1</b>	164	164	164	199	253	253	354	354
<b>E</b>	33	33	33	56	70	70	110	110
<b>EC</b>	101	101	101	151	135	135	180	180
<b>B</b>	90	90	90	100	180	180	220	220
<b>BB</b>	127	127	127	150	230	230	280	280
<b>K</b>	4-D11	4-D11	4-D11	4-D16	4-D16	4-D16	4-D20	4-D20
<b>H</b>	100	100	100	140	140	140	160	160
<b>A</b>	180	180	180	250	285	285	350	350
<b>A'</b>	168	168	168	200	240	240	300	300
<b>AB</b>	210	210	210	290	335	335	410	410
<b>F</b>	8	8	8	10	16	16	18	18
<b>R</b>	M8	M8	M8	M10	M12	M12	M12	M12
<b>D</b>	30	30	35	35	45	45	55	55

# ENSURING ENERGY EFFICIENT

શ્રેજી  
MARKETING



## Associate Company



A Unit Of Shafting  
P. Patel Industries  
94269 72418



A Unit Of Casting  
Prabha Metal Cast  
96016 43373



A Unit Of Motors & Fan  
Zen Energy Product  
81603 05093



Survey No.22, Yamuna Industrial Area, B/h. Satyanarayan  
Weight-Bridge, Tata Motors Street, Gondal Road, Vavdi, Rajkot.

### For Sales

+91 97377 45255  
+91 82009 24671

✉ shreejimarketing03@gmail.com.

### For Service

+91 96016 43373

✉ service.zeppielectricmmotors@gmail.com

