

ABOUT US

We are Importer of Hydraulic honed tubes and Hard Chrome Plated Rods, These tubes have applications in numerous fields of Manufacturing of Hydraulics and Pneumatic Cylinders, our Tubes are provided to clients in numerous sizes and Specifications. We also offer these Tubes to OEM. Which are to be used in earth moving Machinery, JCB Machines, Pneumatic and Hydraulic Cylinders, Hydraulic Presses and Injection Moulding Machines.

SERVICES PROVIDED BY US :

- (1) BURNISHED / HONED TUBES (WITH MTC) (IMPORTED)
- (2) CHROME PLATED PISTON ROD. (WITH MTC) (IMPORTED)
- (3) CHROME PLATED HOLLOW ROD.
- (4) SPACIAL SIZE OF HONED TUBE.
- (5) SPACIAL SIZE OF CHROME PLATED ROD.
- (6) HONING.
- (7) CHROME PLATING .
- (8) PISTION, GLAND, END CAP
- (9) **PRE BOOKING IS AVAILABLE FOR BULK QUANTITY ORDER.**

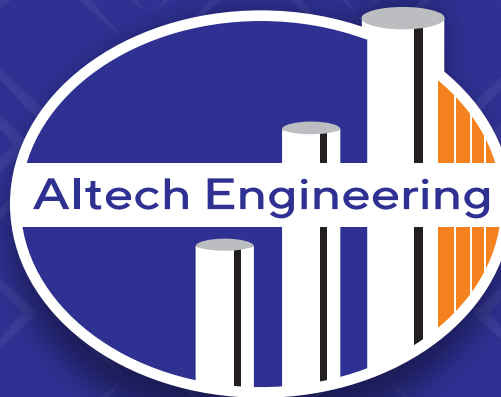
If u have any requirements for honed tube and chrome plated rod then please contact to us with out any hesitation. We will give you best service & material Quality.

We provide our Products & Services in Cities across India

SALES INQUIRY

+91 7069358326 | +91 7069358306
+91 7979061974 | +91 9047360148

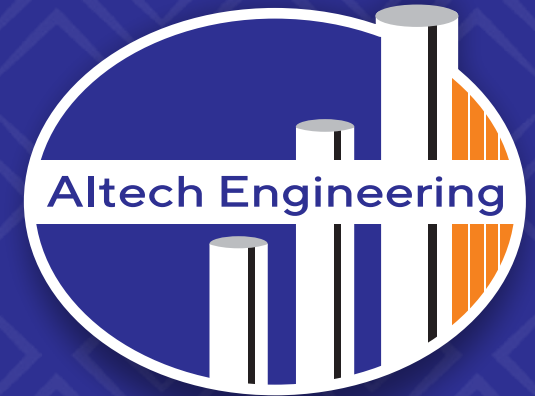
info@altechengg.in
altechamd@gmail.com



+91 7069358326
+91 7069358306
altechamd@gmail.com
www.altechengg.in

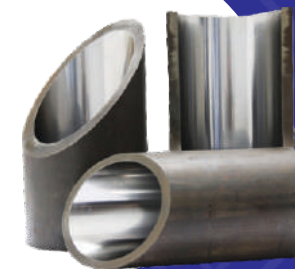


- GF 109, Grand Vishala Industrial Estate, S.P Ring Road, Odhav, Ahmedabad - 382415, Gujarat, INDIA.
- Y. A. Machining (OPC) Pvt. Ltd. (Delhi Branch)
+91 8506965303 | +91 9471638386
- Altech Hydraulics (Hosur, Tamil Naidu - Branch)
+91 7358943337 | +91 9952211068



THE BEST

QUALITY IS
OUR SPECIALITY



SUPPLIER OF

IMPORTED BURNISHED
HONED TUBE &
CHROME PLATED PISTON ROD

www.altechengg.in

5

6

1

CYLINDER TUBE - H9



Grade	E355
Treatment	+C
Surface Finishing	Inner Diameter Roughness Ra < 0.5
Dimensions Tolerance	ISO H9
Size Range	40 X 50, 50 X 58, 50 X 60, 55 X 65, 60 X 70, 63 X 73, 70 X 80, 80 X 90, etc... **(Enquire for Other Sizes)

PRE-HONED TUBE



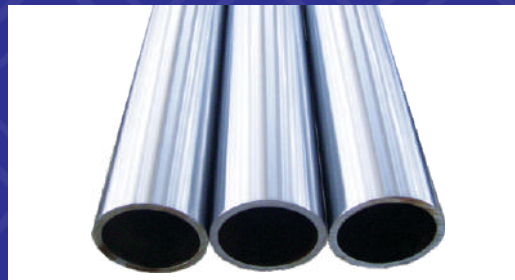
Grade	ST-52 / E355, EN - 08
Treatment	+SR
Surface Finishing	En10305 - 1
Outer Diameter	Smooth as Drawn (EN 10305-1) Inside diameter with stock allowance (for honing or skiving and roller burnishing)
Size Range	ID 40 To 300mm Standard Sizes **(Inquire for Special Sizes) Length Size Upto 6 meters

SKIVED AND ROLLER BURNISHED CYLINDER TUBE



Grade	ST-52/ C20 / P20 EN-08
Treatment	+SR
Surface Finishing	En10305 - 1
Outside Diameter	Smooth as Drawn (EN10305-1)
Inside Diameter	Roughness Ra<0.2
Dimensions Tolerance	Inside Diameter : ISO H8
Size Range	Up to 32 ID to 400 ID (mm) Standard Sizes **(Above 400mm on Special Order) Length Range Upto 6 meters

CHROME PLATED HOLLOW ROD / PIPE



Usage / Application	Manufacturing
Single Piece Length	6 meter
Material	Carbon Steel
Size/Diameter	32 to 300 mm
Finish	Chrome Plating
Hollow Sections	Circular
Technique	Hot Rolled
Machining Process	Plating

CHROME PLATED BARS

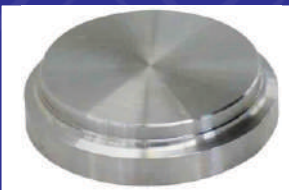


Grade	Ck45, 42CrMo4, 20MnV6, St52, Gr,20
Diameter Range	16mm to 100mm (above 100mm on order)
Length Range	Up to 6000 mm (above on order)
Category	Normal , Induction Hardened , QET + IH
Supply Condition	Ground & Chrome Plated
Surface Roughness &	Ra <0.20
Chrome Thickness	Chrome Thickness
Tolerance on Diameter	ISO f8, f7 (on demand)
Straightness	0.25mm/metre
Surface Hardness	850-1150 HV (Vickers 100g)
Induction Hardness	HRC 50-58 (Depth 1.5 to 2.5)
Corrosion Resistance	Test in Natural Salt Spray according to ASTM B 96 hrs Results evaluation according to ISO 4540 rating 7 - 10

HYDRAULIC CYLINDER PARTS



Hydraulic Cylinder Piston



Hydraulic Cylinder End Cap



Hydraulic Cylinder Gland